

FURNITURE, CABINET AND DISPLAY LIGHTING SYSTEMS **2017**



**Hera<sup>®</sup>**  
Light Years Ahead.

# Index

Products		Page
<b>About Hera</b>		3
<b>Linear LED</b>	<i>NOW DIMMABLE</i>	ELite-LED 4-5
	<i>NEW</i>	ELite-LED XL 6-7
	<i>NEW</i>	T5 and T8 LED Replacement Lamps 8-9
		SlimLite XL-LED 10-11
		Stick3-LED 12-13
		Stick2-LED 14-15
		StickVE-LED 16-17
		TwinStick2-LED 18-19
		Tape-LED 20-21
	<i>NEW</i>	TapeBasic-LED 22-23
<b>Spotlight LED</b>		FR68-LED 24-25
		SR45-LED 26-27
		R55-LED 28-29
		SR68-LED 30-31
		Big6/2-LED 32-33
		ER/EQ-LED 34-35
		EYE-LED 36-37
		HO-LED 38-39
<b>Electrified Shelf Systems</b>	<i>NEW</i>	Power Standard® 40-41
		SPS-Shelf Power System 42-43
	<i>NEW</i>	SPS/VE 44-45
<b>Specialty LED</b>	<i>NEW</i>	Track-LED 46-47
		Stem-LED 48-49
		Panel-LED 50-51
		EdenrocVE-LED 52-53
<b>LED Drivers</b>		6 W, 30 W, 75 W, 96 W, 24 V Drivers 54
		10 W, Constant Current, 350 mA Driver 55
		18 W Constant Current, 350 mA Dimmable Driver 56
<b>LED Accessories</b>		Dimming Accessories 57-58
		Switching Accessories 59
<b>Fluorescent</b>		SlimLite XL T5 60-61
		SlimLite T4 62-63
<b>Applications</b>		Store Fixtures & Displays 64-69
		Commercial/Hospitality 70-73
		Kitchen/Residential 74-77
<b>LED Lighting</b>		General Information 78
<b>Signs &amp; Symbols</b>		79



# **Hera**<sup>®</sup> – Light Years Ahead.



Hera Lighting L.P., Norcross, GA



Hera GmbH & Co. KG, Enger, Germany

## **Hera – Light Years Ahead.**

Hera opened its U.S. headquarters in Atlanta, GA in 1991, and we've rapidly become one of the leading cabinet, furniture and display lighting companies in the United States today. In 2013, we expanded our corporate facility to more than double the office space and to accommodate for more than two times the warehouse space.

We come from a European heritage of innovative lighting design and technology. In fact, we grew out of the very company that developed the first fluorescent lighting for kitchen cabinets in the early 1960's. As manufacturers, we develop our own unique lighting systems that have become extremely popular in a very short time.

Hera's expertise is bringing new trends and technology and has been evident throughout the decades. As a driving force in lighting technology, Hera's main focus for more than 15 years has been LED technology. We have been at the forefront of the LED revolution to bring energy efficient and maintenance free lighting systems to market, resulting in savings and increased revenue for our customers.

All Hera lighting products are unique, stylishly designed and on the leading edge of today's lighting technology. From our innovative LED line to SlimLite Fluorescent, all of our lighting systems exemplify beauty as well as form and function.

At Hera, we're working hard to continue to produce maximum quality lighting systems at reasonable prices. All of our products meet and exceed U.S. safety standards and are UL and/or ETL listed. So, for state-of-the-art lighting systems and accessories that add the perfect accent to any home or business, contact us. One look and you'll understand why – Hera is light years ahead.

# ELite-LED

**NOW  
DIMMABLE**

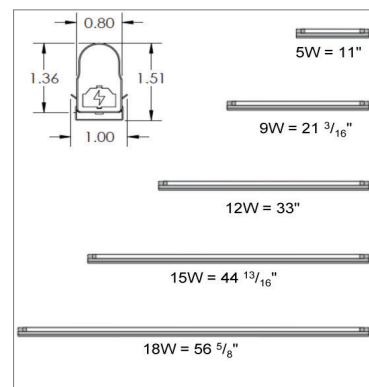


## Economically Priced Light Fixture with Integrated Driver

The ELite-LED is the perfect solution for new installation where lower upfront costs are required. It features an integrated electronic driver and connecting system for easy installation. The ELite-LED uses half the energy of T5 fluorescents with the same brightness and more than twice the lifetime. It is also now available in a dimmable version.

## Product-Features

- 120 Vac LED with integrated electronic driver
- Available in five different sizes: 1' (5 W), 2' (9 W), 3' (12 W), 4' (15 W), 5' (18 W)
- **NEW Feature:** Line Voltage **Dimmable** with compatible LED wall dimmer
- DLC 4.0 QPL listed
- Stocked in 3000 K and 4100 K
- Available from 2700 K to 6500 K by special order
- Finish: White housing with white frosted lens
- 50,000 hours useable life
- Good CRI > 80
- Efficacy  $\geq 104$  lm/W
- Fixtures can interconnect with direct connectors or accessory cables
- Optional hardwire adapter box available
- Magnetic mounting clips available
- 277 V option available by special order (non-dimmable)



Fixture	Watts	Max Interconnected
EL/LED/12	5 W	100
EL/LED/22	9 W	55
EL/LED/34	12 W	41
EL/LED/46	15 W	33
EL/LED/59	18 W	27

### Compatible Dimmers

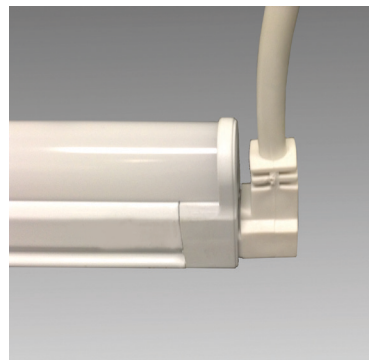
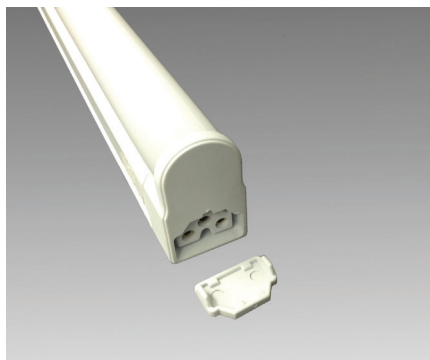
Lutron: Diva - DVWCL-153PH  
Diva - DVELV-303P  
Skylark - CTCL-153PDH  
Radio Ra 2 - RRD-6NA  
Maestro - MRF2-6ND-120

Leviton: Decora - IPL06-10Z  
Decora - 6615-POW  
Decora - 6674-10W

Lightolier: Vega - V1000VAU

Cooper: SKYE AL - SAL06P

\*\*Please contact Hera for a complete list of compatible dimmers.



90 degree connector

## What you'll need to buy

### Light Fixtures

Length	Watt	Lumens	Code No. 3000 K
1'	5 W	525	EL/LED/12/WW
2'	9 W	945	EL/LED/22/WW
3'	12 W	1240	EL/LED/34/WW
4'	15 W	1575	EL/LED/46/WW
5'	18 W	1890	EL/LED/59/WW

Length	Watt	Lumens	Code No. 4100 K
1'	5 W	525	EL/LED/12/CW
2'	9 W	945	EL/LED/22/CW
3'	12 W	1240	EL/LED/34/CW
4'	15 W	1575	EL/LED/46/CW
5'	18 W	1890	EL/LED/59/CW

### Power Cords

	Length	Code No.
With Plug	36"	EL/LED/PC36
	48"	EL/LED/PC48
	72"	EL/LED/PC72
	96"	EL/LED/PC96
	132"	EL/LED/PC132
	144"	EL/LED/PC144

\* 90 degree power cord available by special order

### Accessories

	Code No.
Hardwire Box	EL/LED/HWB
Hardwire Box, switch	EL/LED/HWB/S

### Connecting Cables

	Length	Code No.
Straight Connector	6"	EL/LED/CC6
	12"	EL/LED/CC12
	24"	EL/LED/CC24
	36"	EL/LED/CC36
	48"	EL/LED/CC48
	72"	EL/LED/CC72
	96"	EL/LED/CC96
	144"	EL/LED/CC144
90 Degree Connector	6"	EL/LED/CC6/90
	12"	EL/LED/CC12/90
	24"	EL/LED/CC24/90
	36"	EL/LED/CC36/90
	48"	EL/LED/CC48/90
	72"	EL/LED/CC72/90
	96"	EL/LED/CC96/90
	144"	EL/LED/CC144/90



# ELite-LED XL

NEW

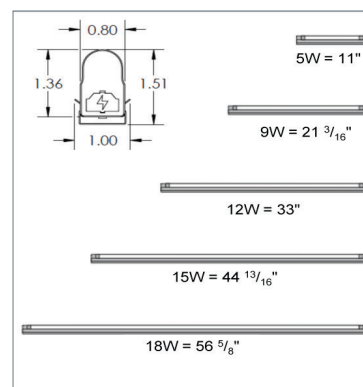


## The Most Cost Effective Way to Upgrade from Fluorescent to LED

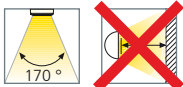
The new ELite-LED XL is the perfect solution for an easy upgrade to LED from our fluorescent Slimlite XL. This product uses the same connecting and power cables as our SlimLite XL T4 and T5 allowing for an easy retrofit. The ELite-LED XL uses half the energy of T5 fluorescents with the same brightness and more than twice the lifetime.

### Product-Features

- 120 Vac LED with integrated electronic driver
- Available in five different sizes: 1' (5 W), 2' (9 W), 3' (12 W), 4' (15 W), 5' (18 W)
- Stocked in 3000 K and 4100 K
- Available from 2700 K to 6500 K by special order
- Finish: White housing with white frosted lens
- 50,000 hours useable life
- Good CRI > 80
- Efficacy: 77-90 lm/W
- Fixtures can interconnect with direct connectors or accessory cables
- Optional hardwire adapter box available
- Magnetic mounting clips available
- EPH certified to NSF/ANSI 2 for use in food zones



Fixture	Watts	Max Interconnected
EL/LED/12	5 W	100
EL/LED/22	9 W	55
EL/LED/34	12 W	41
EL/LED/46	15 W	33
EL/LED/59	18 W	27





## What you'll need to buy

### Light Fixtures

Length	Watt	Lumens	Code No. 3000 K	Code No. 4100 K
1'	5 W	418	EL/LED/12/3000/XL	EL/LED/12/4000/XL
2'	9 W	793	EL/LED/22/3000/XL	EL/LED/22/4000/XL
3'	12 W	925	EL/LED/34/3000/XL	EL/LED/34/4000/XL
4'	15 W	1374	EL/LED/46/3000/XL	EL/LED/46/4000/XL
5'	18 W	1455	EL/LED/59/3000/XL	EL/LED/59/4000/XL

### Accessories

	Description	Code No.
Power Cord*	6' long	SPC/XL
	6' with roller switch	SPC/S/XL
Connecting Cables	6" long	SCC6/XL
	1' long	SCC12/XL
	2' long	SCC24/XL
	4' long	SCC48/XL
	6' long	SCC72/XL
	10' long	SCC120/XL
Direct Connector		SDC/XL
Hardwire Box		SHWC/XL
	with switch	SHWC/S/XL
On/OFF Rocker Switch		SRS/XL

\*Note: Power cords and connecting cables are also available with 90° or straight connectors and in various lengths

# T5 & T8 LED Replacement Lamps

NEW

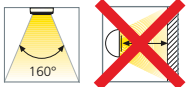


## Replace Fluorescent Lamps without any Rewiring

These new LED replacement lamps are to be used to upgrade existing fluorescents to LED fixtures. It is a direct T5 and T8 lamp replacement with no wiring needed allowing for a quick and easy installation. Enjoy the benefits of LEDs such as immediate energy reduction, highly reduced maintenance, utility rebates and high, even light output.

## Product-Features

- Multiple Lumen output options available
- Available in 3000 K, 3500 K, 4000 K and 5000 K
- Extremely long lifetime of 50,000 hours
- Good CRI > 80
- Suitable for use in fixtures where ambient temperature is between -4°F and 113°F
- DLC QPL Listed
- Quick and easy installation with no rewiring
- Emits virtually no UV rays or IR
- No mercury allowing for non-hazardous waste disposal
- Compatible with electronic ballasts only
- Limited 5 year warranty







## What you'll need to buy

### T8 LED Replacement Bulbs

Length	Color	Lumens	Watt	Code No.
24"	3000 K	1050	8	LRL/T8/24/3000
	4000 K	1050	8	LRL/T8/24/4000
36"	3000 K	1350	10	LRL/T8/36/3000
	4000 K	1350	10	LRL/T8/36/4000
48"	3000 K	1650	12	LRL/T8/48/3000/HE
	4000 K	1650	12	LRL/T8/48/4000/HE
48"	3000 K	1850	15	LRL/T8/48/3000
	4000 K	1850	15	LRL/T8/48/4000
48"	3000 K	2350	18	LRL/T8/48/3000/HO
	4000 K	2350	18	LRL/T8/48/4000/HO

\*Note: 8' T8 LED replacement lamps available. DLC does not offer a standard certification for this length.

### T5 LED Replacement Bulbs

Length	Color	Lumens	Watt	Code No.
46" HE	3000 K	1900	15	LRL/T5/46/3000/HE
	4000 K	1900	15	LRL/T5/46/4000/HE
46" HO	3000 K	3200	24	LRL/T5/46/3000/HO
	4000 K	3200	24	LRL/T5/46/4000/HO

# SlimLite XL-LED

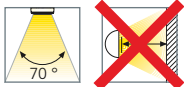
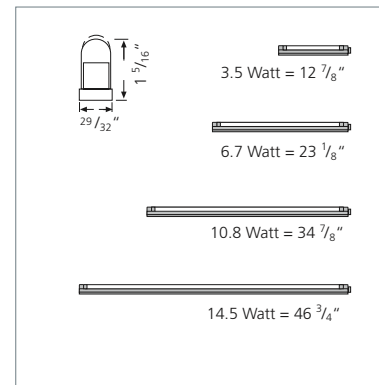


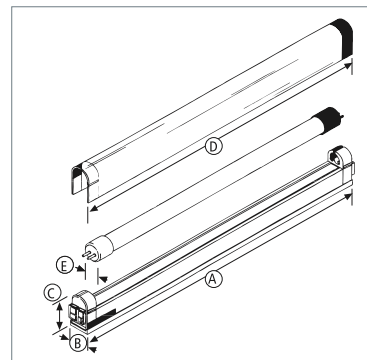
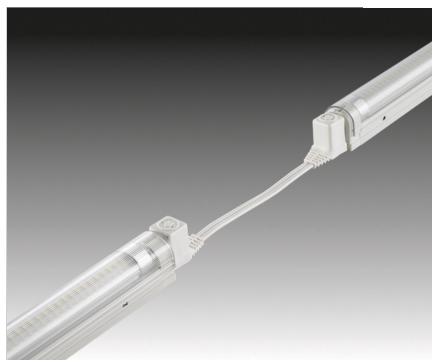
## An Easy Way to Upgrade to LED

The SlimLiteXL-LED is an easy way to upgrade from current SlimLite XL fluorescent fixtures to LED. Just unplug the existing fixture, plug in the new fixture to existing power cords and you are on your way to energy efficient and low maintenance displays. With the same light output as our T5 fluorescent, this LED uses only half the energy and offers double the lamp life.

## Product-Features

- LED with integrated electronic driver
- Available in five different sizes: 1' (3.5 W), 2' (6.7 W), 3' (10.8 W) and 4' (14.5 W)
- Stocked in 3000 K and 4100 K
- Available from 2700 K to 6500 K by special order
- 50,000 hours useable life
- Excellent CRI > 85
- Plug-in modular system allows for easy installation and continuous lighting
- Approved for use in closet applications
- Optional plexiglas cover available (to be ordered separately)





## What you'll need to buy

### Light Fixtures

Description	Watt	Length	Lumens	Color	Code No.
ES12LED	3.5	12 <sup>7</sup> / <sub>8</sub> "	298	3000 K	ES12LED/WW
			348	4100 K	ES12LED/CW
ES22LED	6.7	23 <sup>1</sup> / <sub>8</sub> "	567	3000 K	ES22LED/WW
			661	4100 K	ES22LED/CW
ES34LED	10.8	34 <sup>7</sup> / <sub>8</sub> "	895	3000 K	ES34LED/WW
			1044	4100 K	ES34LED/CW
ES46LED	14.5	46 <sup>3</sup> / <sub>4</sub> "	1193	3000 K	ES46LED/WW
			1392	4100 K	ES46LED/CW

Includes LED tube

	ES12	ES22	ES34	ES46
fixture length	12 <sup>7</sup> / <sub>8</sub> "	23 <sup>1</sup> / <sub>8</sub> "	34 <sup>7</sup> / <sub>8</sub> "	46 <sup>3</sup> / <sub>4</sub> "
fixture width	<sup>29</sup> / <sub>32</sub> "	<sup>29</sup> / <sub>32</sub> "	<sup>29</sup> / <sub>32</sub> "	<sup>29</sup> / <sub>32</sub> "
fixture height with diffuser	1 <sup>5</sup> / <sub>16</sub> "	1 <sup>5</sup> / <sub>16</sub> "	1 <sup>5</sup> / <sub>16</sub> "	1 <sup>5</sup> / <sub>16</sub> "
tube length	11 <sup>1</sup> / <sub>4</sub> "	21 <sup>1</sup> / <sub>2</sub> "	33 <sup>1</sup> / <sub>4</sub> "	45 <sup>1</sup> / <sub>8</sub> "
tube diameter	<sup>5</sup> / <sub>8</sub> "	<sup>5</sup> / <sub>8</sub> "	<sup>5</sup> / <sub>8</sub> "	<sup>5</sup> / <sub>8</sub> "
watts	3,5	6,7	10,8	14,5
lumens	348	661	1044	1392
line current	0,04	0,09	0,13	0,16
CRI	> 85	> 85	> 85	>85
voltage	AC 120	AC 120	AC 120	AC 120
frequency	60 Hz	60 Hz	60 Hz	60 Hz
maximum watts in line	585 watts	585 watts	585 watts	585 watts
power factor	> .95	> .97	> .98	> .98
efficiency (%)	> 70	> 70	> 75	> 75

### Accessories

	Description	Code No.
Power Cord*	6' long	SPC/XL
	6' with roller switch	SPC/S/XL
Connecting Cables	6" long	SCC6/XL
	1' long	SCC12/XL
	2' long	SCC24/XL
	4' long	SCC48/XL
	6' long	SCC72/XL
	10' long	SCC120/XL
Direct Connector		SDC/XL
Hardwire Box		SHWC/XL
	with switch	SHWC/S/XL
On/OFF Rocker Switch		SRS/XL
Optional Plexiglas Cover	for ES12LED	SPLEX12
	for ES22LED	SPLEX22
	for ES34LED	SPLEX34
	for ES46LED	SPLEX46

\*Note: Power cords and connecting cables are also available with 90° or straight connectors and in various lengths



# Stick3-LED

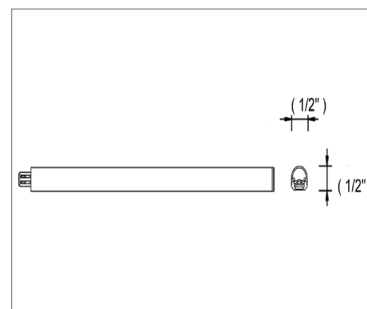


## Miniature Linear LED Light with Smooth, Even Light Output

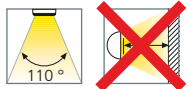
This latest addition to the Stick series offers recessed or surface-mounted options for furniture, displays, showcases and cabinets. The Stick3-LED has a frosted lens to produce a smooth output similar to a fluorescent with no LED hotspots and much smaller dimensions. This linear LED lighting fixture has a large beam angle and very high light output.

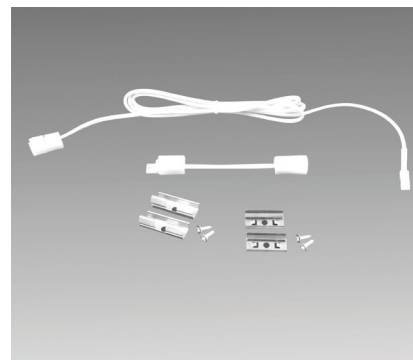
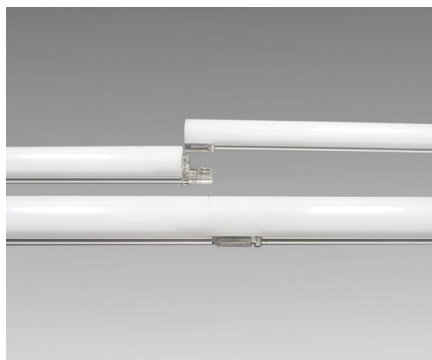
### Product-Features

- Linear LEDs with frosted lens
- Extremely small dimensions: width  $\frac{1}{2}$ ", height  $\frac{1}{2}$ "
- Light fixture can be recessed (flush with board) or surface mounted
- Available in five sizes:  
8" (2.5 W), 12" (4 W), 24" (7.5 W), 34" (11.5 W) and 46" (15 W)
- Stocked in 3000 K and 4000 K
- Available from 2700 K to 6500 K by special order
- 50,000 hours useable life
- Excellent CRI > 85
- Efficacy  $\geq 104$  lm/W
- Extremely high, even light output
- To be used with 24 Vdc Constant Voltage Driver
- Magnetic mounting clips available
- 45 degree mounting clips available



Model	Length	Max Linkable
Stick3-LED 8"	7 7/8"	17
Stick3-LED 12"	11 13/16"	11
Stick3-LED 24"	22 7/16"	6
Stick3-LED 34"	34 1/4"	4
Stick3-LED 46"	44 7/8"	3





## What you'll need to buy

### Light Fixtures

Length	Lumens	Code No. 3000 K	Code No. 4000 K
8"	260	STICK3/8/WW	STICK3/8/CW
12"	420	STICK3/12/WW	STICK3/12/CW
24"	840	STICK3/24/WW	STICK3/24/CW
34"	1260	STICK3/34/WW	STICK3/34/CW
46"	1680	STICK3/46/WW	STICK3/46/CW

### LED Constant Voltage Drivers (see page 54)

Description	Code No.
6 Watt	PS24V/06/S
30 Watt	PS24V/30/S
75 Watt	PS24V/75/S
96 Watt	PS24V/96/DIM/S

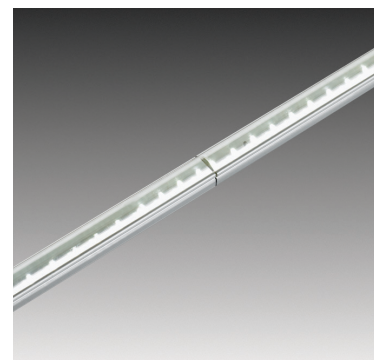
### Cables and Connectors

Description	Code No.
Power Cord 59"	STICK3/PC
Connecting Cable 2"	STICK3/CC2
Connecting Cable 12"	STICK3/CC12
Connecting Cable 39"	STICK3/CC39
Power Cord Extension 39"	KB12LEDCC39
Power Cord Extension 98"	KB12LEDCC98
Terminal Block	STICKTB

### Optional Accessories (see pages 57-59)

Description	Code No.
Dimmer	STICKPSDIM/S
Dimmer Controller	DIMCONTROL/S
Distributor Cable	STICKDIM/YCABLE
Motion-Activated Infrared Switch	IRSWITCH
Remote Control Dimmer	RCPDIM
Magnetic Mounting Clips	STICK3/MC/MAGNET
45 Degree Mounting Clips	STICK3/MC/45/SET
Mounting Clip Set	STICK3/MC/SET
Rocker Switch	SWITCH/PS24

# Stick2-LED

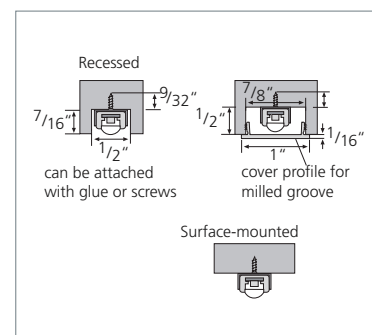
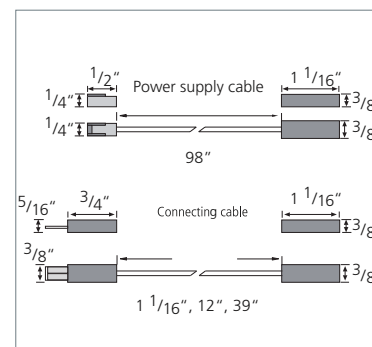
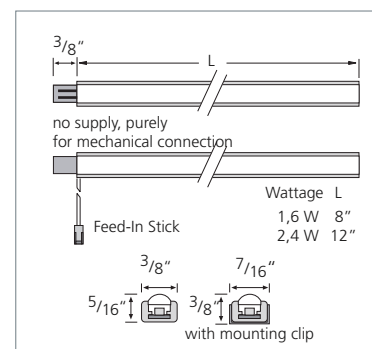
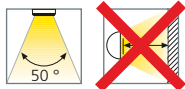


## Miniature Linear LED Light with Integrated Connecting System

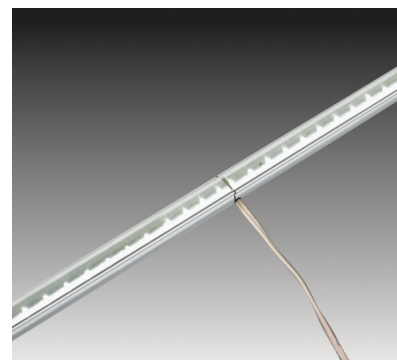
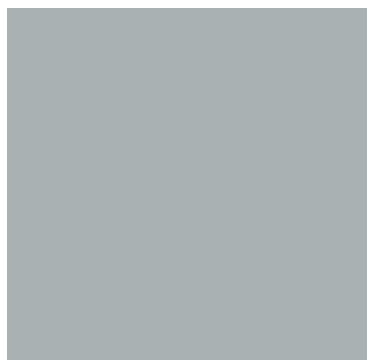
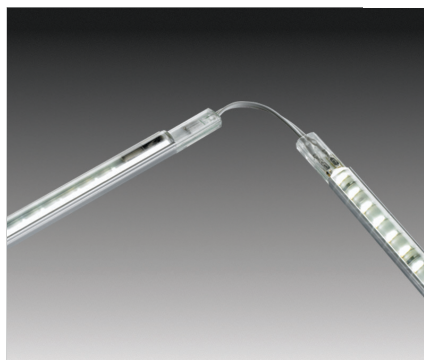
These ultracompact strips of LED lighting feature a very high and even light output and an integrated connecting system. The Stick2-LED has an excellent CRI making it the perfect solution for displays where superior color rendering is needed. They are also UL EPH listed (NSF) for use in food applications.

### Product-Features

- Aluminum and plexiglas housing
- Extremely small dimensions: width  $\frac{3}{8}$ ", height  $\frac{5}{16}$ "
- Light fixture can be recessed (flush with board) or surface mounted
- Available in four different sizes: 8" (1.6 W), 12" (2.4 W), 34" (7.2 W) and 46" (9.7 W)
- Stocked in 3000 K and 4100 K
- Available from 2700 K to 6500 K by special order
- 50,000 hours useable life
- Excellent CRI > 90
- Extremely high, even light output
- EPH certified to NSF/ANSI 2 for use in food zones
- Approved for use in closet applications
- For unlimited runs, order one Feed-In Stick for every 8'
- LED connecting cables are available in  $1\frac{3}{16}$ ", 12" and 39" lengths
- Power supply cable 98" to be ordered separately
- To be used with 24 Vdc Constant Voltage Driver
- Magnetic mounting clips available
- 45 degree mounting clips available
- Dimmable with optional accessories







Feed-In Stick

## What you'll need to buy

### Light Fixtures

#### 3000 K

Length	Lumens	Code No.
8"	80	STICK2/8/WW
12"	109	STICK2/12/WW
34"	341	STICK2/34/WW
46"	461	STICK2/46/WW
12" Feed-In Stick		STICK2/WPC/WW

#### 4100 K

Length	Lumens	Code No.
8"	70	STICK2/8/CW
12"	107	STICK2/12/CW
34"	304	STICK2/34/CW
46"	411	STICK2/46/CW
12" Feed-In Stick		STICK2/WPC/CW

### LED Constant Voltage Drivers (see page 54)

Description	Code No.
6 Watt	PS24V/06/S
30 Watt	PS24V/30/S
75 Watt	PS24V/75/S
96 Watt	PS24V/96/DIM/S

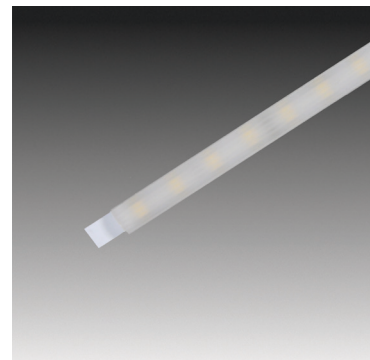
### Optional Accessories (see pages 57-59)

Description	Code No.
Dimmer	STICKPSDIM/S
Dimmer Controller	DIMCONTROL/S
Distributor Cable	STICKDIM/YCABLE
Motion-Activated Infrared Switch	IRSWITCH
Remote Control Dimmer	RCPSDIM
Magnetic Mounting Clips	STICK2/MC/MAGNET
45 Degree Mounting Clips	STICK2/MC/45
Mounting Clip Set	STICK2/MC/SET
Cover Profile	STICK2/CP/39
Rocker Switch	SWITCH/PS24
Occupancy Switch	STICK2/OC

### Cables and Connectors

Description	Code No.
Power Cord 98"	STICK2/PC
Connecting Cable 1"	STICK2/CC1
Connecting Cable 12"	STICK2/CC12
Connecting Cable 39"	STICK2/CC39
Power Cable Extension 39"	KB12LEDCC39
Power Cable Extension 98"	KB12LEDCC98
Terminal Block	STICKTB

# StickVE-LED

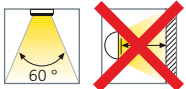
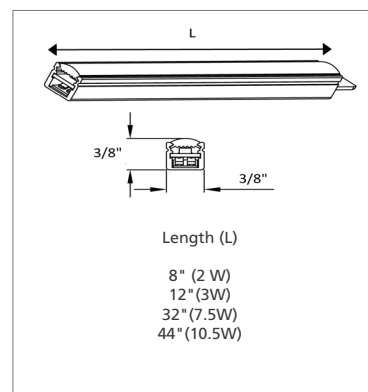


## Value Engineered Miniature Linear LED Light With Integrated Connecting System

StickVE-LED is a value engineered version of our Stick2-LED. These ultracompact strips of LED lighting have a high and even light output with no dark spots at connecting point. Enjoy the benefits of LED technology such as lower energy consumption and a long lifetime at a lower price. The StickVE-LED is also UL EPH (NSF) approved for use in food applications.

### Product-Features

- Aluminum and plexiglas housing
- Extremely small dimensions: width:  $\frac{3}{8}$ ", height:  $\frac{5}{16}$ "
- Light fixture can be recessed (flush with board) or surface mounted
- Available in four sizes: 8" (2 W), 12" (3 W), 32" (7.5 W) and 44" (10.5 W)
- Stocked in 3000 K and 4100 K
- Available from 2700 K to 6500 K by special order
- 30,000 hours useable life
- Good CRI > 80
- Extremely high, even light output
- EPH certified to NSF/ANSI 2 for use in food zones
- Integrated magnets for installation on metal
- LED connecting cables are available in 4", 12", 17", 21", 23" and 39"
- 98" Power supply cable to be ordered separately
- To be used with 24 Vdc Constant Voltage Driver
- Dimmable with optional accessories





## What you'll need to buy

### Light Fixtures

#### 3000 K

Length	Lumens	Code No.
8"	103	STICKVE/8/WW/M
12"	155	STICKVE/12/WW/M
32"	439	STICKVE/32/WW/M
44"	594	STICKVE/44/WW/M

#### 4100 K

Length	Lumens	Code No.
8"	117	STICKVE/8/CW/M
12"	175	STICKVE/12/CW/M
32"	497	STICKVE/32/CW/M
44"	672	STICKVE/44/CW/M

### LED Constant Voltage Drivers (see page 54)

Description	Code No.
6 Watt	PS24V/06/S
30 Watt	PS24V/30/S
75 Watt	PS24V/75/S
96 Watt	PS24V/96/DIM/S

### Optional Accessories (see pages 57-59)

Description	Code No.
Dimmer	STICKPSDIM/S
Dimmer Controller	DIMCONTROL/S
Distributor Cable	STICKDIM/YCABLE
Motion-Activated Infrared Switch	IRSWITCH
Remote Control Dimmer	RCPSDIM
Cover Profile	STICK2/CP/39
Rocker Switch	SWITCH/PS24

### Cables and Connectors

Description	Code No.
Power Cord 98"	STICKVE/PC
Power Cord 17"	STICKVE/PC/17
Connecting Cable 4"	STICKVE/CC4
Connecting Cable 12"	STICKVE/CC12
Connecting Cable 17"	STICKVE/CC17
Connecting Cable 21"	STICKVE/CC21
Connecting Cable 23"	STICKVE/CC23
Connecting Cable 39"	STICKVE/CC39
Power Cord Extension 39"	KB12LEDCC39
Power Cord Extension 98"	KB12LEDCC98
Terminal Block	STICKTB

# TwinStick2-LED

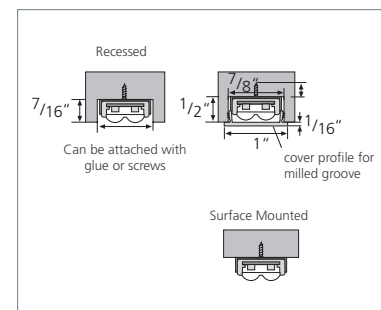
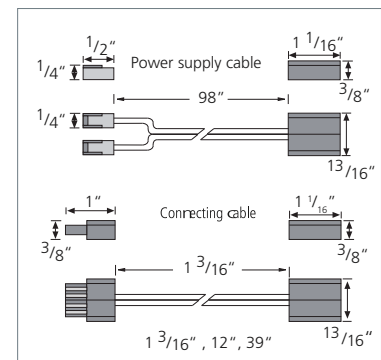
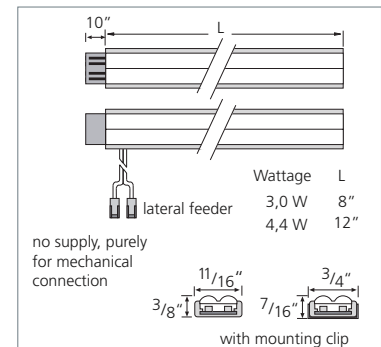
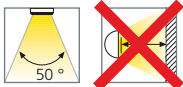


## High Light Output LED Light With Integrated Connecting System

Hera's TwinStick2-LED has an extremely high light output, similar to T5 fluorescent light fixtures. Low energy consumption, excellent color rendering and virtually no maintenance (lifetime 50,000 hours) are additional benefits. TwinStick2-LEDs are also UL EPH listed (NSF) for food applications.

## Product-Features

- Aluminum and plexiglas housing
- Extremely small dimensions: width:  $1\frac{1}{16}$ " , height:  $\frac{5}{16}$ "
- Light fixture can be recessed (flush with board) or surface mounted
- Available in two different sizes: 8" (3.0 W) and 12" (4.4 W)
- Stocked in 3000 K and 4100 K
- Available from 2700 K to 6500 K by special order
- 50,000 hours useable life
- Excellent CRI  $\geq 90$
- Extremely high, even light output
- EPH certified to NSF/ANSI 2 for use in food zones
- Approved for use in closet applications
- For unlimited runs order one Feed-In Twinstick for every 8'
- LED connecting cables are available in  $1\frac{3}{16}$ " , 12" and 39" lengths
- Power supply cable 98" to be ordered separately
- To be used with 24 Vdc Constant Voltage Driver
- Dimmable with optional accessories





## What you'll need to buy

### Light Fixtures

#### 3000 K

Length	Lumens	Code No.
8"	122	TWINSTICK2/8/WW
12"	204	TWINSTICK2/12/WW
12" Feed-In Stick		TWINSTICK2/WPC/ WW

#### LED Constant Voltage Drivers (see page 54)

Description	Code No.
6 Watt	PS24V/06/S
30 Watt	PS24V/30/S
75 Watt	PS24V/75/S
96 Watt	PS24V/96/DIM/S

### Cables and Connectors

Description	Code No.
Power Cord 98"	TWINSTICK2/PC
Connecting Cable 1"	TWINSTICK2/CC1
Connecting Cable 12"	TWINSTICK2/CC12
Connecting Cable 39"	TWINSTICK2/CC39
Power Cord Extension 39"	KB12LEDCC39
Power Cord Extension 98"	KB12LEDCC98
Terminal Block	STICKTB

#### 4100 K

Length	Lumens	Code No.
8"	133	TWINSTICK2/8/CW
12"	202	TWINSTICK2/12/CW
12" Feed-In Stick		TWINSTICK2/WPC/CW

#### Optional Accessories (see pages 57-59)

Description	Code No.
Dimmer	STICKPSDIM/S
Dimmer Controller	DIMCONTROL/S
Distributor Cable	STICKDIM/YCABLE
Motion-Activated Infrared Switch	IRSWITCH
Remote Control Dimmer	RCPSDIM
Cover Profile	STICK2/CP39
Mounting Clip Set	TWINSTICK2/MC/SET
Rocker Switch	SWITCH/PS24

# Tape-LED

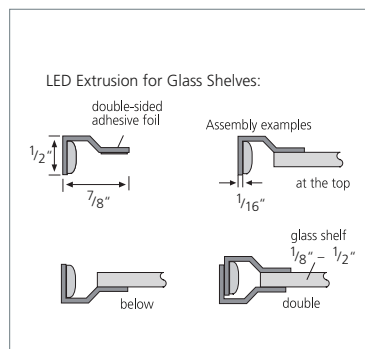
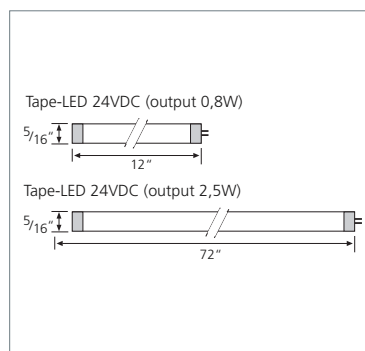


## Cost Effective, Flexible LED Strips

Tape-LED can be used as accent lighting for displays, furniture, kitchen cabinets, shelving and even closet applications. The Tape-LED has a silicone cover over the diodes allowing for more durability while illuminating without heating, ideal for delicate products and artwork. The flexible mounting allows installation in and around most angles.

## Product-Features

- Self adhering, flexible LED strip, 0.8 W/ft
- Stocked in 3000 K and 4100 K
- Available from 2700 K to 6500 K by special order
- Finish: white tape with clear silicone cover
- 30,000 hours useable life
- Excellent CRI > 90
- Approved for use in closet applications
- Maximum 16' interconnected strips per power cable
- Can connect up to:
  - 93' - 75 W driver
  - 37' - 30 W driver
  - 7' - 6 W driver
- Quick and easy installation, can be shortened in 6" increments for custom fit
- Additional LED connecting cables are available in 2" and 20"
- To be used with 24 Vdc Constant Voltage Driver
- Dimmable with available accessories







## What you'll need to buy

### Light Fixtures

#### 3000 K

Length	Lumens	Code No.
12"	44	TAPELED/WW

#### 4100 K

Length	Lumens	Code No.
12"	44	TAPELED/CW

### LED Constant Voltage Drivers (see page 54)

Description	Code No.
Constant Voltage Driver 6 Watt	PS24V/06/S
Constant Voltage Driver 30 Watt	PS24V/30/S
Constant Voltage Driver 75 Watt	PS24V/75/S
Constant Voltage Driver 96 Watt	PS24V/96/DIM/S

### Cables and Connectors

Description	Code No.
98" Power Cord	TAPELEDPC
Connecting Cable 2"	TAPELEDCC2
Connecting Cable 20"	TAPELEDCC20
Power Cord Extension 39"	KB12LEDCC39
Power Cord Extension 98"	KB12LEDCC98
Terminal Block	STICKTB

### Optional Accessories (see pages 57-59)

Description	Code No.
Dimmer	STICKPSDIM/S
Dimmer Controller	DIMCONTROL/S
Dimming Distributor Cable	STICKDIM/YCABLE
Low Voltage Switch	IRSWITCH
Remote Control Dimmer	RCPSDIM
Shelf Extrusion	TAPE/EXT
Rocker Switch	SWITCH/PS24

# TapeBasic-LED

NEW

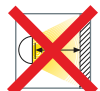
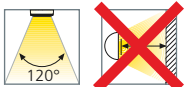


## Customizable LED Lights at an Affordable Price

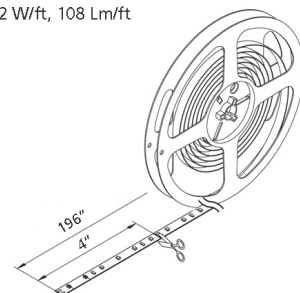
The TapeBasic-LED is optimal for projects with custom requirements. This product is available in multiple color temperatures and Lumen outputs, and can be ordered pre-cut, soldered and in an extrusion.

### Product-Features

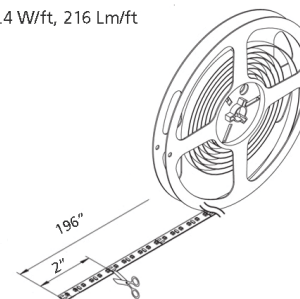
- Self adhering, flexible LED strip
- Stocked in 196" (5m) rolls
- Can be special ordered in pre-cut lengths with soldered power cord
- Can be ordered pre-assembled in an extrusion
- Available in three densities: 300 LEDs/roll (20 W), 600 LEDs/per roll (40 W) and 1200 LEDs/roll (80 W)
- Stocked in 2700 K, 3000 K, 4000 K, 5000 K and 6500 K
- Available from 2700 K to 6500 K
- Finish: white tape with exposed LEDs
- 35,000 hours useable life
- Good CRI > 80
- Efficacy  $\geq 90$  lm/W
- To be used with 24 Vdc Constant Voltage Driver



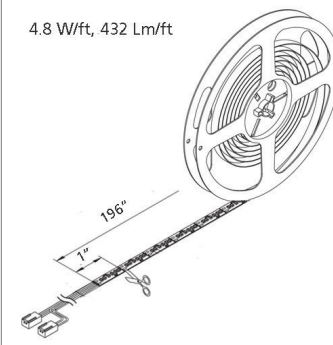
1.2 W/ft, 108 lm/ft



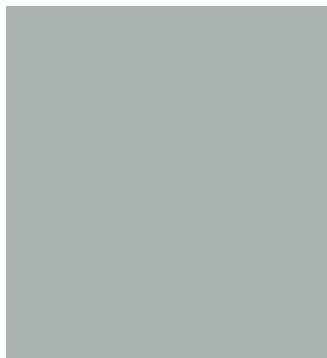
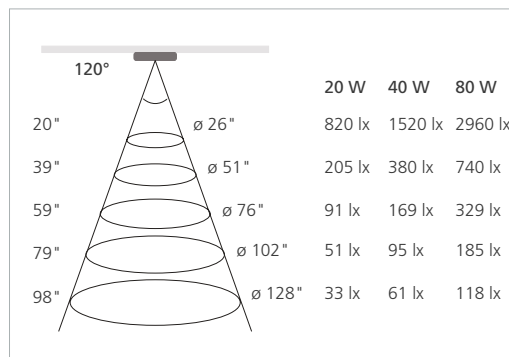
2.4 W/ft, 216 lm/ft



4.8 W/ft, 432 lm/ft



\*Note: TapeBasic 1200 max strip length of 98 7/16" if cut



## What you'll need to buy

### Light Fixtures

Description	Watt/Roll	Lumens	Code No. 3000 K	Code No. 4000 K
300	20 W	108 Lm/ft.	TAPE/B3/196/3000	TAPE/B3/196/4000
600	40 W	216 Lm/ft.	TAPE/B6/196/3000	TAPE/B6/196/4000
1200	80 W	432 Lm/ft.	TAPE/B12/196/3000	TAPE/B12/196/4000

\*Note: Also stocked in 2700 K, 5000 K and 6500 K

### Cables and Connectors

Description	Code No.
79" Power Cord	TAPE/B/PC79/N8
79" Power Cord, TapeBasic 1200	TAPE/B12/PC98/N
39" Power Cord, TapeBasic 1200	TAPE/B12/PC39/N
Connecting Cable 1"	TAPE/B/CC1/N8
Connecting Cable 6"	TAPE/B/CC6/N8
Connecting Cable 12"	TAPE/B/CC12/N8
Connecting Cable 2", TapeBasic 1200	TAPE/B12/CC2/N
Connecting Cable 8", TapeBasic 1200	TAPE/B12/CC8/N
Connecting Cable 98", TapeBasic 1200	TAPE/B12/CC98/N
Power Cord Extension 39"	KB12LEDCC39
Power Cord Extension 98"	KB12LEDCC98
Direct Connector	TAPE/B/DC/N8
Direct Connector, TapeBasic 1200	TAPE/B12/DC/N
Terminal Block	STICKTB

### Optional Accessories (see page 57-59)

Description	Code No.
Dimmer	STICKPSDIM/S
Dimmer Controller	DIMCONTROL/S
Dimming Distributor Cable	STICKDIM/YCABLE
Low Voltage Switch	IRSWITCH
Remote Control Dimmer	RCPSDIM
Rocker Switch	SWITCH/PS24

### Extrusions

Description	Code No.
Metal Extrusion, 78"	TAPE/B/EXT1/78
Clear Lens	TAPE/B/EXT1/LC/78
Frosted Lens	TAPE/B/EXT1/LF/78

### LED Constant Voltage Drivers (see page 56)

Description	Code No.
6 Watt	PS24V/06/S
30 Watt	PS24V/30/S
75 Watt	PS24V/75/S
96 Watt	PS24V/96/DIM/S

# FR68-LED

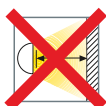
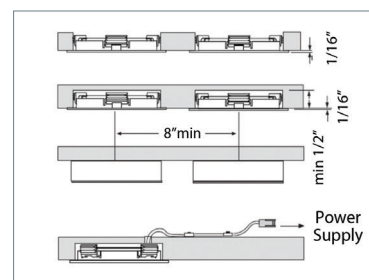
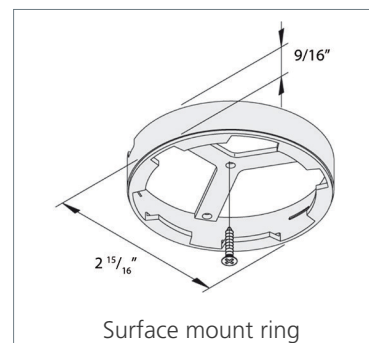
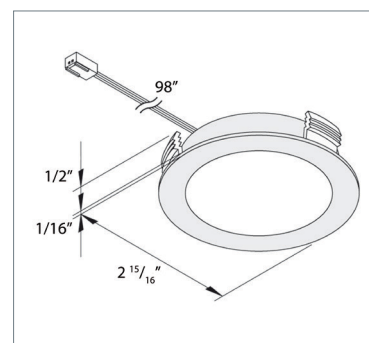


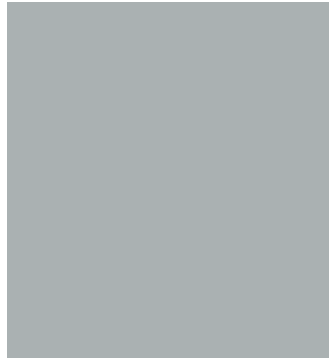
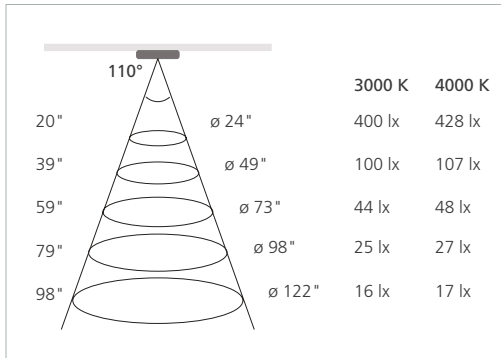
## Flat, Recessed LED Spotlight with Frosted Lens

The FR68-LED is a LED spotlight with a frosted lens that helps reduce glare. The lens also eliminates diode dots for a sleeker look if the spotlight is mounted slightly above eye level.

### Product-Features

- Energy efficient using only 4 W
- Stocked in 3000 K and 4000 K
- Available from 2700 K to 6500 K by special order
- Stainless Steel or Matte Chrome finish
- 50,000 hours useable life
- Efficacy: 60 lm/W
- Excellent CRI > 85
- Attached 98" connecting cable with plug-in connector
- To be used with 24 Vdc Constant Voltage Driver
- Surface mount ring available separately
- Dimmable with optional accessories





## What you'll need to buy

### Spotlights

#### 3000 K

Finish	Lumens	Code No.
Stainless Steel	240	FR68/SS/3000
Matte Chrome	240	FR68/MC/3000

#### 4000 K

Finish	Lumens	Code No.
Stainless Steel	240	FR68/SS/4000
Matte Chrome	240	FR68/MC/4000

### LED Constant Voltage Drivers (see page 54)

Description	Code No.
Constant Voltage Driver 6 Watt	PS24V/06/S
Constant Voltage Driver 30 Watt	PS24V/30/S
Constant Voltage Driver 75 Watt	PS24V/75/S
Constant Voltage Driver 96 Watt	PS24V/96/DIM/S

### Cables and Connectors

Description	Code No.
Power Cable Extension 39"	KB12LEDCC39
Power Cable Extension 98"	KB12LEDCC98
Terminal Block	STICKTB

### Optional Accessories (see page 57-59)

Description	Code No.
Surface Mount Ring, Stainless Steel	DIR68/SS
Surface Mount Ring, Matte Chrome	DIR68/MC
Dimmer	STICKPSDIM/S
Dimmer Controller	DIMCONTROL/S
Motion-Activated Infrared Switch	IRSWITCH
Remote Control Dimmer	RCPSDIM
Rocker Switch	SWITCH/PS24

# SR45-LED

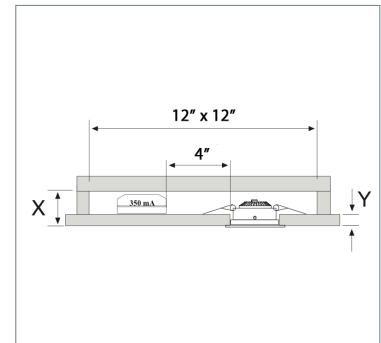
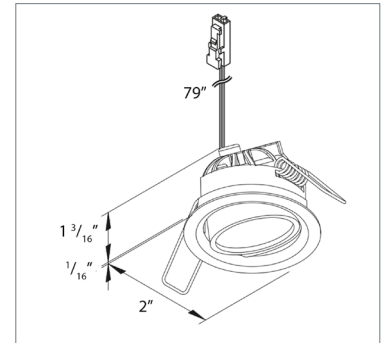


## Recessed Swivel LED Spotlight with High Light Output

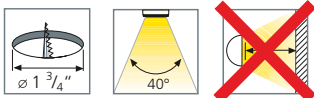
The SR45-LED is an ultra compact spotlight which delivers very high light output. It also features a 20° swivel and tilt to either side allowing for optimal lighting in a display case.

### Product-Features

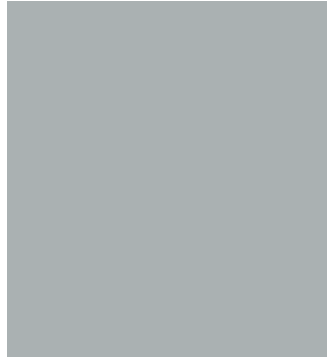
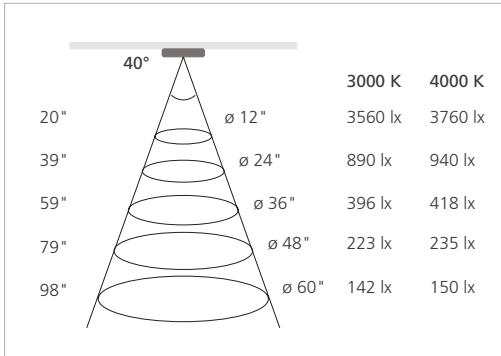
- Energy efficient using only 5.3 W
- Stocked in 3000 K and 4000 K
- Available from 2700 K to 6500 K by special order
- Stainless Steel or White finish
- 50,000 hours useable life
- Efficacy: 91 lm/W
- Good CRI > 82
- 20° swivel and tilt to either side
- Attached 79" connecting cable with plug-in connector
- Approved for use in closet applications
- To be used with 350 mA Constant Current Driver
- Dimmable with optional accessories



Panel Thickness (Y)	Mounting Depth (X)
Up to 5/8"	1 1/4"
11/16" to 3/4"	1 3/8"
13/16" to 1 7/8"	1 5/8"
15/16" to 1 3/16"	1 13/16"







## What you'll need to buy

### Spotlights

#### 3000 K

Finish	Lumens	Code No.
Stainless Steel	485	SR45/SS/3000
White	485	SR45/WH/3000

#### 4000 K

Finish	Lumens	Code No.
Stainless Steel	485	SR45/SS/4000
White	485	SR45/WH/4000

### LED Constant Current Drivers (for specs refer to pages 55-56)

Description	Code No.
Constant Current Driver 10 Watt	PSLED/10
Dimmable Constant Current Driver 18 Watt	PSLED/DIM/S
LED Dimmer Controller	DIMCONTROL/S

### Cables and Connectors

Description	Code No.
Connecting Cable 36"	LEDCC36
Connecting Cable 72"	LEDCC72

# R55-LED

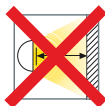
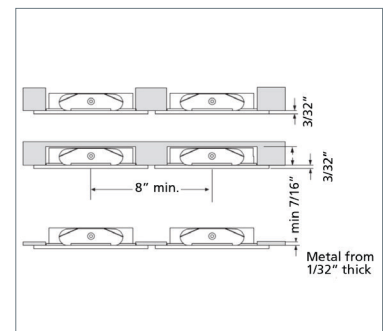
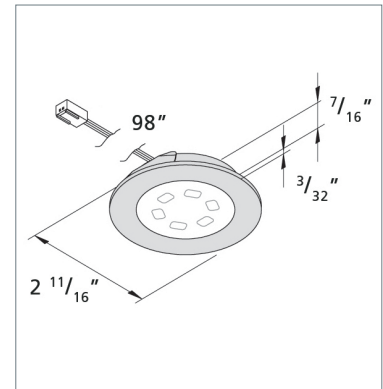


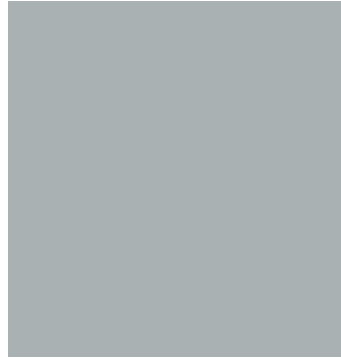
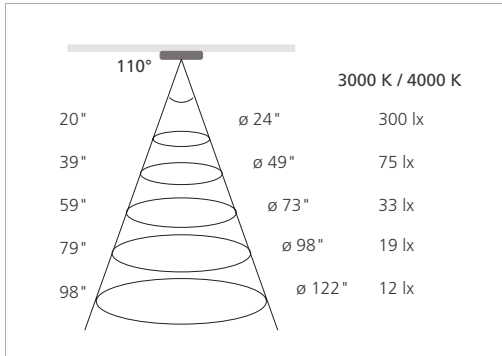
## High Quality, Low Profile LED Spotlight

The R55-LED is a great option for projects requiring a shallow mounting hole. This spotlight features the latest LED technology and comes in several different finishes.

### Product-Features

- Energy efficient using only 3 W
- Stocked in 3000 K and 4000 K
- Available from 2700 K to 6500 K by special order
- Stainless Steel, Matte Chrome, Black and White finishes available
- 50,000 hours useable life
- Efficacy: 60 lm/W
- Excellent CRI >95
- Attached 98" connecting cable with plug-in connector
- Suitable for mounting in sheet metal
- To be used with 24 Vdc Constant Voltage Driver
- Dimmable with available accessories
- Surface mount ring available separately





## What you'll need to buy

### Spotlights

#### 3000 K

Finish	Lumens	Code No.
Stainless Steel	180	R55-LED/SS/WW
Matte Chrome	180	R55-LED/CH/WW
Black	180	R55-LED/BL/WW
White	180	R55-LED/WH/WW

#### 4000 K

Finish	Lumens	Code No.
Stainless Steel	180	R55-LED/SS/CW
Matte Chrome	180	R55-LED/CH/CW
Black	180	R55-LED/BL/CW
White	180	R55-LED/WH/CW

### LED Constant Voltage Drivers (see page 54)

Description	Code No.
6 Watt	PS24V/06/S
30 Watt	PS24V/30/S
75 Watt	PS24V/75/S
96 Watt	PS24V/96/DIM/S

### Optional Accessories (see pages 57-59)

Description	Code No.
Surface Mount Ring, Matte Chrome	DIR55/MC
Surface Mount Ring, Stainless Steel	DIR55/SS
Surface Mount Ring, White	DIR55/WH
Dimmer	STICKPSDIM/S
Dimmer Controller	DIMCONTROL/S
Distributor Cable	STICKDIM/YCABLE
Motion-Activated Infrared Switch	IRSWITCH
Remote Control Dimmer	RCPSDIM
Rocker Switch	SWITCH/PS24

### Cables and Connectors

Description	Code No.
Power Cable Extension 39"	KB12LEDCC39
Power Cable Extension 98"	KB12LEDCC98
Terminal Block	STICKTB

# SR68-LED

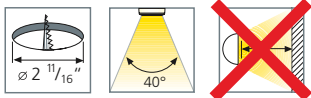
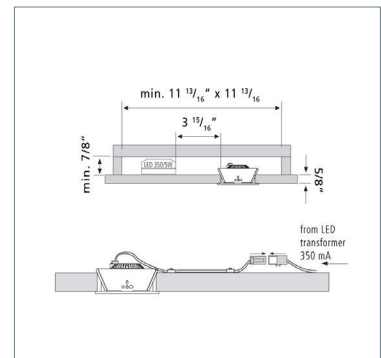
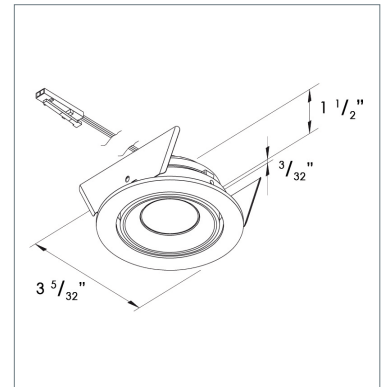


## Recessed Swivel LED Spotlight with Extremely High Light Output

Designed for applications where high levels of light are desired, this spotlight is perfect for large arrangements where product presentation is crucial. With swivel and tilt capabilities for flexibility and a semi-frosted lens, these spotlights are perfect for creating an attractive and well-balanced display.

### Product-Features

- High quality Brushed Aluminum housing
- Energy efficient using only 5.3 W
- Stocked in 3000 K and 4000 K
- Available from 2700 K to 6500 K by special order
- 50,000 hours useable life
- Efficacy: Warm White 90 lm/W, Cool White 95 lm/W
- Good CRI > 80
- 20° swivel and tilt to either side
- Recess depth 1 1/2"
- Approved for use in closet applications
- Attached 98" connecting cable with plug-in connector
- To be used with 350 mA Constant Current Driver
- Dimmable with available accessories





## What you'll need to buy

### Spotlights

#### 3000 K

Finish	Watt	Lumens	Code No.
Brushed Aluminum	5.3	481	SR68/WW

#### 4000 K

Finish	Watt	Lumens	Code No.
Brushed Aluminum	5.3	481	SR68/CW

### LED Constant Current Drivers (see pages 55-56)

Description	Code No.
Constant Current Driver 10 Watt	PSLED/10
Dimmable Constant Current Driver 18 Watt	PSLED/DIM/S
LED Dimmer Controller	DIMCONTROL/S

### Cables and Connectors

Description	Code No.
Connecting Cable 36"	LEDCC36
Connecting Cable 72"	LEDCC72

# Big6/2-LED

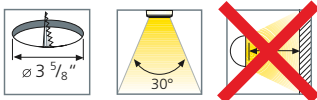
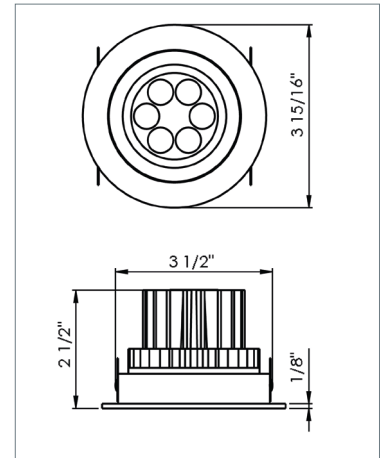


## Recessed Swivel LED for Soffits

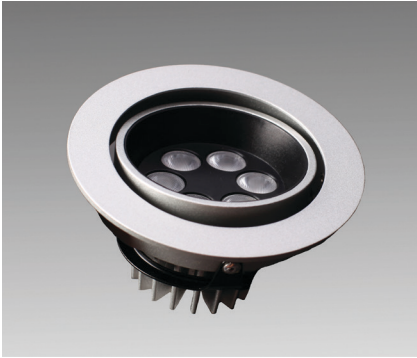
The Big6/2 was especially developed for applications where very high levels of light are necessary or desired. This spotlight also features an omnidirectional swivel allowing for optimal lighting in display cases. The Big6/2-LED is perfect for larger display cases and even for installation in soffits.

## Product-Features

- Energy efficient using only 7.2 W
- Omnidirectional swivel
- Recess depth 3"
- Stocked in 3000 K and 6000 K
- Available from 2700 K to 6500 K by special order
- Stainless Steel or White finish available
- 50,000 hours useable life
- Efficacy: Warm White 102 lm/W  
Cool White 119 lm/W
- Good CRI > 80
- Reduced glare factor
- Attached 79" connecting cable with plug in connector
- To be used with 350 mA Constant Current Driver
- Dimmable using the PSLED/DIM/S







## What you'll need to buy

### Spotlights

#### 3000 K

Finish	Lumens	Code No.
Stainless Steel	734	BIG6/2/SS/WW
White	734	BIG6/2/WH/WW

#### 6000 K

Finish	Lumens	Code No.
Stainless Steel	856	BIG6/2/SS/CW
White	856	BIG6/2/WH/CW

### LED Constant Current Drivers (see pages 55-56)

Description	Code No.
Constant Current Driver 10 Watt	PSLED/10
Dimmable Constant Current Driver 18 Watt	PSLED/DIM/S
LED Dimmer Controller	DIMCONTROL/S

### Cables and Connectors

Description	Code No.
Connecting Cable 36"	LEDCC36
Connecting Cable 72"	LEDCC72

# ER/EQ-LED

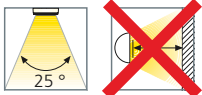
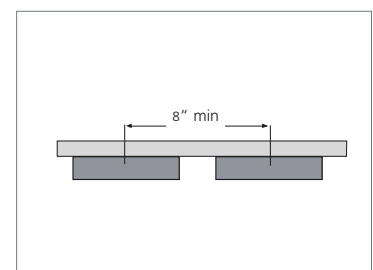
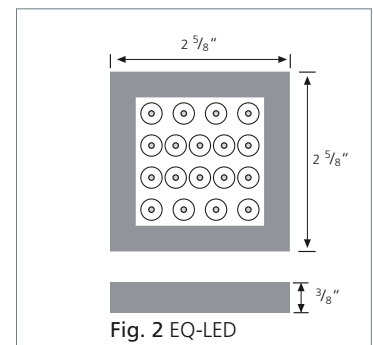
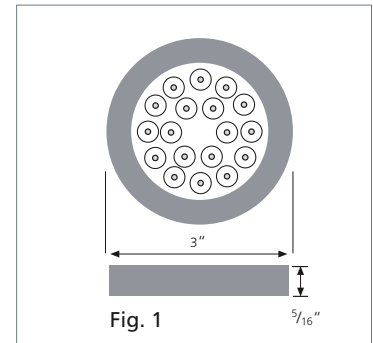


## Quality LED Spotlight At An Affordable Price

The ER-LED and EQ-LED are the latest in economically priced LED spotlights. These spotlights are an easy and affordable option when upgrading to LED technology while having very low energy consumption.

## Product-Features

- Energy efficient using only 1.2 W
- Flat dimensions. ER-LED height only  $\frac{5}{16}$ " , EQ-LED height only  $\frac{3}{8}$ "
- Efficacy: 58 lm/W
- Excellent CRI > 90
- Stocked in 3000 K and 4100 K
- Available from 2700 K to 6500 K by special order
- Stainless Steel finish in either Round or Square Design
- 30,000 hours useable life
- Approved for use in closet applications
- Attached 98" connecting cable with plug-in connector
- Additional LED connecting cables are available in 39" and 98"
- To be used with 24 Vdc Constant Voltage Driver
- Compatible with Hera 24 V LED switching accessories
- Dimmable with optional accessories





## What you'll need to buy

### ER/EQ-LED Light Fixture

#### ER/LED

Color	Lumens	Code No.
3000 K	69	ERLEDSS/WW
4100 K	69	ERLEDSS/CW

#### ER/LED - 3 Light Set

Color	Code No.
3000 K	LED/SETERWW
4100 K	LED/SETERCW

#### LED Constant Voltage Drivers (see page 54)

Description	Code No.
Constant Voltage Driver 6 W	PS24V/06/S
Constant Voltage Driver 30 W	PS24V/30/S
Constant Voltage Driver 75 W	PS24V/75/S
Constant Voltage Driver, 96 W	PS24V/96/DIM/S
Power Cable extension 39"	KB12LEDCC39
Power Cable extension 98"	KB12LEDCC98

#### EQ-LED

Color	Lumens	Code No.
3000 K	69	EQLEDSS/WW
4100 K	69	EQLEDSS/CW

#### EQ/LED - 3 Light Set

Color	Code No.
3000 K	LED/SETEQWW
4100 K	LED/SETEQCW

#### Optional Accessories (see pages 57-59)

Description	Code No.
Dimmer	STICKPSDIM
Dimmer Controller	DIMCONTROL
Distributor Cable	STICKDIM/YCABLE
Motion-Activated Infrared Switch	IRSWITCH
Remote Control Dimmer	RCPSDIM
Terminal Block	STICKTB
Rocker Switch	SWITCH/PS24

# Eye-LED

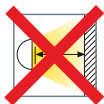
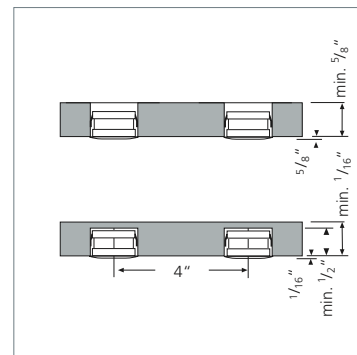
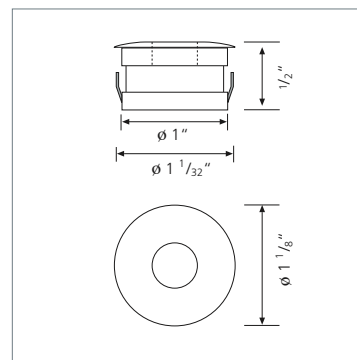


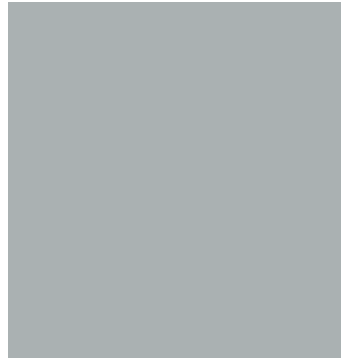
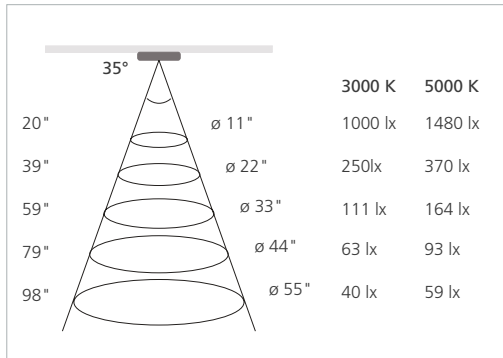
## Miniature LED Spotlight

The Eye-LED is the perfect lighting solution for all applications where minimal installation dimensions are essential. It fits into a 1" diameter x 1/2" depth installation opening.

## Product-Features

- Energy efficient using only 1 W
- Extremely small dimensions: recess depth 1/2", recess diameter 1"
- Efficacy: 69-105 lm/W
- Warm White CRI > 90, Cool White CRI > 80
- Stocked in 3000 K and 5000 K
- Available from 2700 K to 6500 K by special order
- Stainless Steel or Brushed Aluminum finish
- Approved for use in closet applications
- 51" connecting cable with plug-in connector attached
- Additional LED connecting cables are available in 36" and 72"
- To be used with 350 mA Constant Current Driver
- Dimmable with available accessories





## What you'll need to buy

### Spotlights

#### 3000 K

Finish	Lumens	Code No.
Stainless Steel	69	EYELEDSS/WW
Aluminum	69	EYELEDA/WW

#### 5000 K

Finish	Lumens	Code No.
Stainless Steel	94	EYELEDSS/CW
Aluminum	94	EYELEDA/CW

### LED Constant Current Drivers (see pages 55-56)

Description	Code No.
Constant Current Driver 10 Watt	PSLED/10
Dimmable Constant Current Driver 18 Watt	PSLED/DIM/S
LED Dimmer Controller	DIMCONTROL

### Cables and Connectors

Description	Code No.
Connecting Cable 36"	LEDCC36
Connecting Cable 72"	LEDCC72
Terminal Block	TBLED/B

# HO-LED

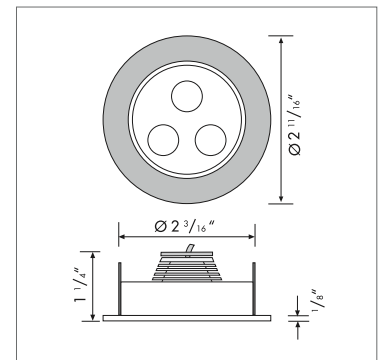


## High Output Swivel and Non-Swivel LED Spotlights

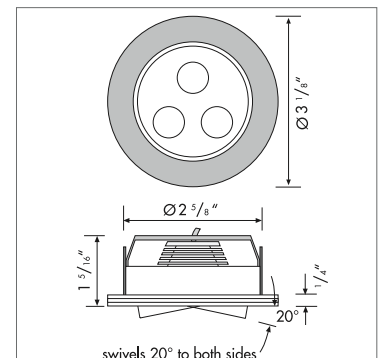
Hera's swivel and non-swivel HO-LED spotlights are ideal for applications where high levels of LED light are desired and minimal installation dimensions are not so important. The spotlights feature integrated 3 x 1.2 W high power LEDs with full LED optics. HO-LED Spots are perfect for displays, larger showcases, inside closets and even soffits.

### Product-Features

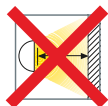
- Energy efficient using only 3.6 W
- High quality, Brushed Aluminum housing
- Stocked in 3000 K and 5000 K
- Available from 2700 K to 6500 K by special order
- Swivel (+/- 20 degrees) and non-swivel version available
- Recess depth 1 1/8" non-swivel, 1 1/16" swivel
- Efficacy: 6500 K 84 lm/W, 3000 K 106 lm/W
- Approved for use in closet applications
- Attached 79" connecting cable with plug-in connector
- Additional LED connecting cables are available in 36" and 72"
- To be used with 350 mA Constant Current Driver
- Dimmable with available accessories



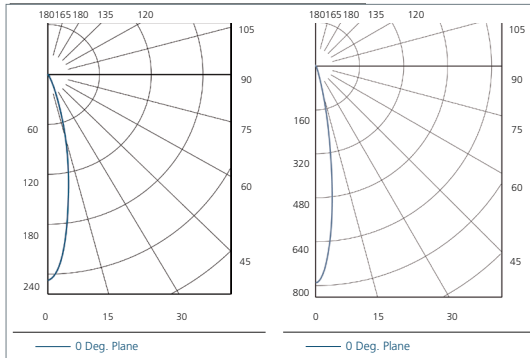
HO-LED 1



HO-LED 2

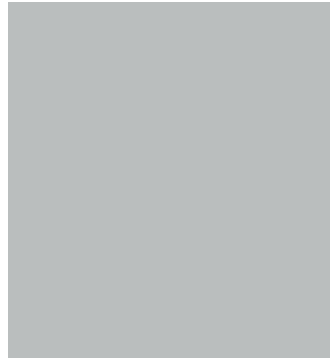






HO-LED2/WW

HO-LED1/CW



## What you'll need to buy

### Spotlights

#### HO-LED1

##### 3000 K

Finish	Lumens	Code No.
Brushed Aluminum	302	HO-LED1/WW

##### 5000 K

Finish	Lumens	Code No.
Brushed Aluminum	381	HO-LED1

#### HO-LED2

##### 3000 K

Finish	Lumens	Code No.
Brushed Aluminum	302	HO-LED2/WW

##### 5000 K

Finish	Lumens	Code No.
Brushed Aluminum	381	HO-LED2

### LED Constant Current Drivers (see pages 55-56)

Description	Code No.
Constant Current Driver 10 Watt	PSLED/10
Dimmable Constant Current Driver 18 Watt	PSLED/DIM/S
LED Dimmer Controller	DIMCONTROL/S

### Cables

Description	Code No.
Connecting Cable 36"	LEDCC36
Connecting Cable 72"	LEDCC72

# Power Standard®

NEW

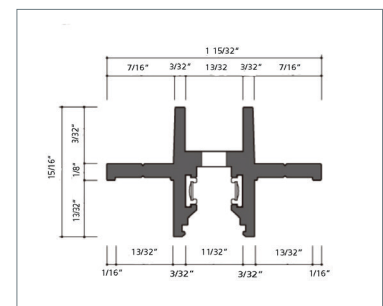
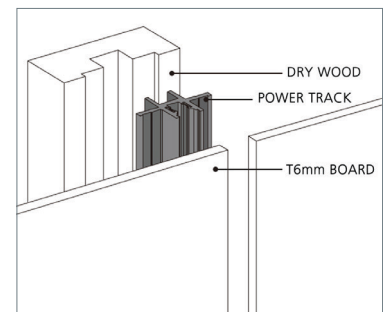
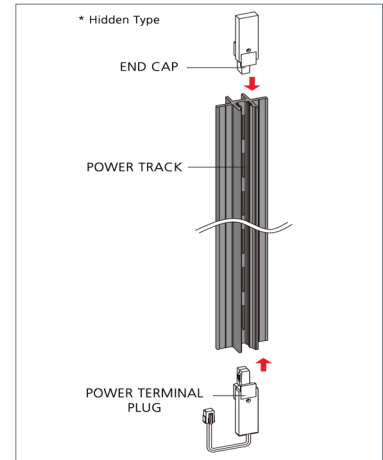


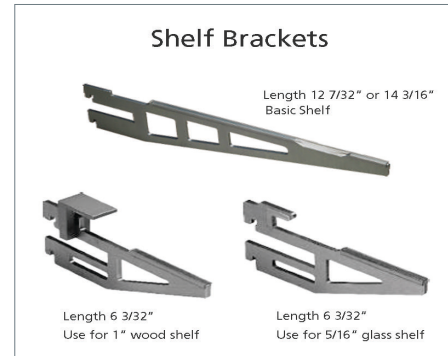
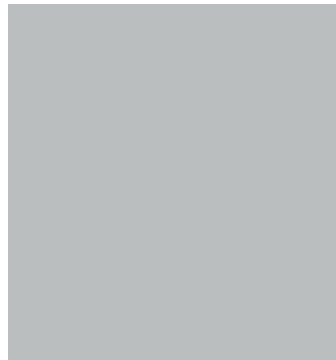
## Versatile Electrified Standard System

The new Power Standard® is an electrified standard system which makes it easy to integrate lighting in shelving for retail environments. Installation is quick with the simple plug and play system. Shelving brackets are mounted directly on the track and can be easily moved without effecting the lighting.

## Product-Features

- Track available in 94" and 108", field cuttable
- Custom lengths available by special order
- Dark Gray and Stainless Steel finish
- Custom finishes available by special order
- Shelf bracket with shelf plug may be easily moved up and down the track
- Standard brackets are available
- Brackets may be special ordered in various sizes for wood or glass shelves
- To be used with 24 Vdc Constant Voltage Driver





## What You'll Need To Buy

Description	Code No.
D.) Shelf Power Track 94", Gray	SPS/2/TRACK/94/DG
Shelf Power Track 108", Gray	SPS/2/TRACK/108/DG
Shelf Power Track 94", Stainless Steel	SPS/2/TRACK/94/SS
Shelf Power Track 108", Stainless Steel	SPS/2/TRACK/108/SS
E.) Top Cap	SPS/2/TC
B.) Power Terminal Plug	SPS/2/PTP
C.) Shelf Plug	SPS/2/SHP

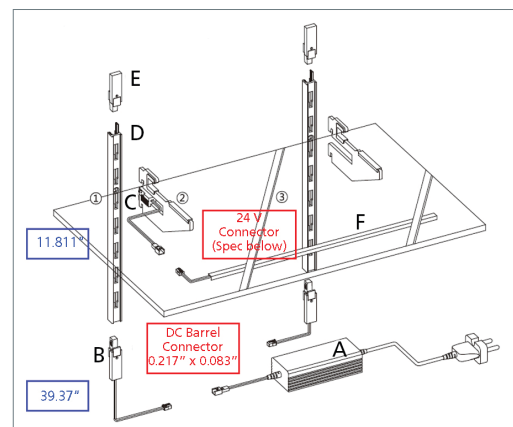
### LED Constant Voltage Driver (see page 54)

Description	Code No.
A.) Constant Voltage Driver 75 W	PS24V/75/DC
Constant Voltage Driver 96 W	PS24V/96/DIM/S

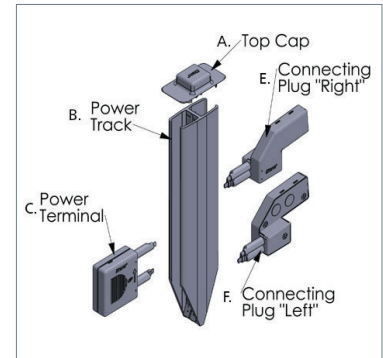
## Lighting Options

F.) Can be used with:

- Stick3-LED (see page 12-13)
- Stick2-LED (see page 14-15)
- StickVE-LED (see page 16-17)
- TwinStick2-LED (see page 18-19)
- TapeBasic-LED (see page 22-23)



# SPS-Shelf Power System



## The Easiest Way to Integrate Lighting into Lozier Gondolas

The Shelf Power System works with Hera's 24 V LED lighting and allows you to quickly and effortlessly re-merchandise and reset prefabricated metal shelving displays without altering the lighting in any way. Benefits of this system are quick shelving changes, flexibility, fast installation, and it is aesthetically pleasing with no visible wires.

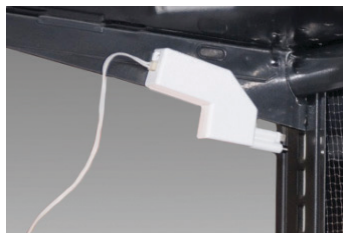
### Product-Features

- Power Track is designed for Lozier gondolas
- Track available in 72" and 96". Different lengths can be achieved by cutting to size
- System consists of several parts, depending on type of lighting used:
  - A. Top Cap
  - B. Power Track
  - C. Power Terminal
  - D. LED Driver
  - E. Connecting Plug "Right"
  - F. Connecting Plug "Left"
  - G. Shelf Power Cords
  - H. Stick2-LED, Stick3-LED, StickVE-LED, TwinStick2-LED or TapeBasic
  - I. Magnetic mountic clips available

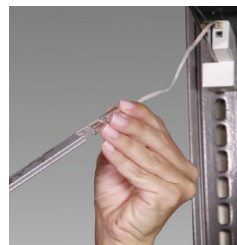
## Four Simple Steps



Step One:  
Insert Power Track  
into gondola



Step Two:  
Attach magnetic Power Terminal  
onto shelf and insert into gondola



Step Three:  
Plug lighting into Shelf  
Power Cord



Step Four:  
Plug Power Terminal into  
gondola and driver into outlet



## What you'll need to buy

### SPS Shelf Power System

Description	Code No.
Power Track 72" with Top Cap	SPS/TRACK/72
Power Track 96" with Top Cap	SPS/TRACK/96
Constant Voltage Driver 75 W with Power Terminal	SPS/PT/75
Constant Voltage Driver 96 W	PS24V/96/DIM/S
Connecting Plug "right"	SPS/PLUG/SH/R
Connecting Plug "left"	SPS/PLUG/SH/L
12" Power Cord for 13" Shelf	SPS/STICK2PC/12
17" Power Cord for 18" Shelf	SPS/STICK2PC/17
23" Power Cord for 24" Shelf	SPS/STICK2PC/23
Magnetic Mounting Clips	STICK2/MC/MAGNET

### Lighting Options

Can be used with:

- Stick3-LED (see page 12-13)
- Stick2-LED (see page 14-15)
- StickVE-LED (see page 16-17)
- TwinStick2-LED (see page 18-19)
- TapeBasic-LED (see page 22-23)

# SPS/VE

NEW

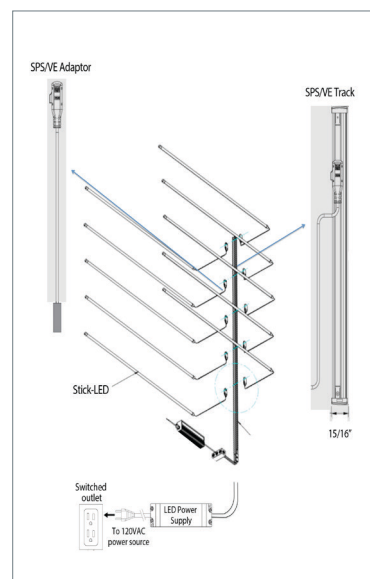


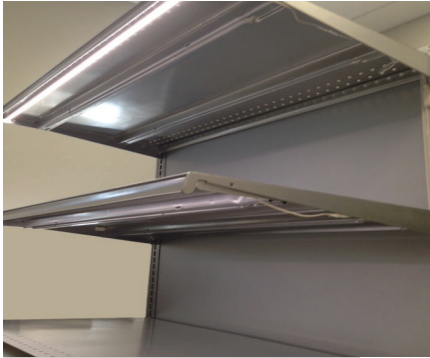
## The Most Cost Effective Way to Integrate Lighting into Gondola Shelving

The new SPS/VE is a value engineered Shelf Power System that works with Hera's 24 V LED lighting. The track has magnetic backing allowing for easy installation in metal gondolas. This system also features simple rotate and lock shelf plugs which aid in quick and easy shelving changes.

### Product-Features

- Track available in 48" and 78" lengths
- Track comes in a White or Black finish
- Track has a magnetic back for easy installation on metal shelving
- Accessories and cables have small magnets to help with wire management
- To be used with Hera 24 Vdc Consant Voltage Driver
- Each track can support up to 100 W
- Can be used with Stick3, Stick2, StickVE, Twinstick2 and TapeBasic





## What You'll Need To Buy

Description	Code No.
SPS/VE Power Track 48", White	SPSVE/TRACK/48/WH
SPS/VE Power Track 48", Black	SPSVE/TRACK/48/BL
SPS/VE Power Track 78", White	SPSVE/TRACK/78/WH
SPS/VE Power Track 78", Black	SPSVE/TRACK/78/BL
Power Terminal Plug 16", White	SPSVE/PTP/16/WH
Power Terminal Plug 16", Black	SPSVE/PTP/16/BL
Power Terminal Plug 39", White	SPSVE/PTP/39/WH
Power Terminal Plug 39", Black	SPSVE/PTP/39/BL
Shelf Plug 16", White	SPSVE/SHP/16/WH
Shelf Plug 16", Black	SPSVE/SHP/16/BL

## Lighting Options

Can be used with:

- Stick3-LED (see page 12-13)
- Stick2-LED (see page 14-15)
- StickVE-LED (see page 16-17)
- TwinStick2-LED (see page 18-19)
- TapeBasic-LED (see page 22-23)

## LED Constant Voltage Drivers (see page 54)

Description	Code No.
30 Watt	PS24V/30/DC
75 Watt	PS24V/75/DC
96 Watt	PS24V/96/DIM/S



# Track-LED

NEW

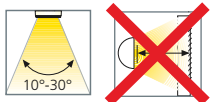


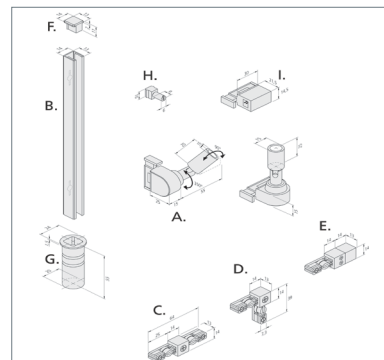
## Flexible Track System for Display Cases

This product is a great option for any display case, especially those with glass shelving. The individual spotlights swivel 360° at the base and 90° at the top of the spotlight for perfect illumination of merchandise.

## Product-Features

- Track is sold in 3 different sizes: 12", 24" and 39"
- Energy efficient using only 1.5 W per LED Spot
- Available in 4000 K and 5000 K
- Black or Anodized Aluminum finish
- 50,000 hours useable life
- Efficacy: 53 lm/W
- Good CRI >80
- To be used with 24 Vdc Constant Voltage Driver
- Glass shelf divider available
- 360° swivel at the base of spotlight;
- 90° swivel top of spotlight
- 3/4" mounting hole
- Mounting sleeve available for vertical installation of the Track-LED
- Each Live End can support up to 48 Watts
- Adapter available to allow for compatibility with Stick3, Stick2, Twinstick2, StickVE, TapeBasic and some spotlights





## What you'll need to buy

### Light Fixtures

Description	Code No.
A.) Black, 4000K	TL/SPOT/BL/4000/15
Black, 5000K	TL/SPOT/BL/5000/15
Aluminum, 4000K	TL/SPOT/AL/4000/15
Aluminum, 5000K	TL/SPOT/AL/5000/15
Aluminum, 4000K with 48° lens	TL/SPOT/AL/4000/48
Aluminum, 5000K with 48° lens	TL/SPOT/AL/5000/48
Black, 4000K with 48° lens	TL/SPOT/BL/4000/48
Black, 5000K with 48° lens	TL/SPOT/BL/5000/48

### Tracks

Description	Code No.
B.) Track LED 12", Black	TL/TRACK/12/BL
Track LED 12", Anodized Aluminum	TL/TRACK/12/AL
Track LED 24", Black	TL/TRACK/24/BL
Track LED 24", Anodized Aluminum	TL/TRACK/24/AL
Track LED 39", Black	TL/TRACK/39/BL
Track LED 39", Anodized Aluminum	TL/TRACK/39/AL

\*Add /S for Track-LED without screw holes

### Feeder and Connectors

Description	Code No.
C.) Straight Connector, Black	TL/SC/BL
Straight Connector, Aluminum	TL/SC/AL
D.) L Connector, Black	TL/LC/BL
L Connector, Aluminum	TL/LC/AL
E.) Live End, Black	TL/LE/BL
Live End, Aluminum	TL/LE/AL
F.) End Cap, Black	TL/EC/BL
End Cap, Aluminum	TL/EC/AL
G.) Mounting Sleeve, Black	TL/MS/BL
Mounting Sleeve, Aluminum	TL/MS/AL
H.) Glass Shelf Holder	TL/GSH
I.) Adapter, Black	TL/MTA/BL
Adapter, Aluminum	TL/MTA/AL

### LED Constant Voltage Drivers (see page 54)

Description	Code No.
6 Watt	PS24V/06/S
30 Watt	PS24V/30/S
75 Watt	PS24V/75/S
96 Watt	PS24V/96/DIM/S

# Stem-LED

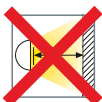
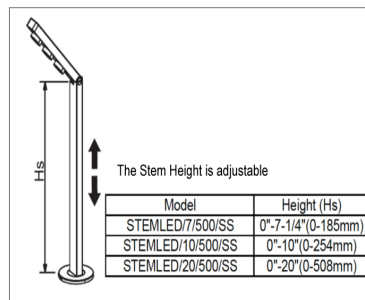
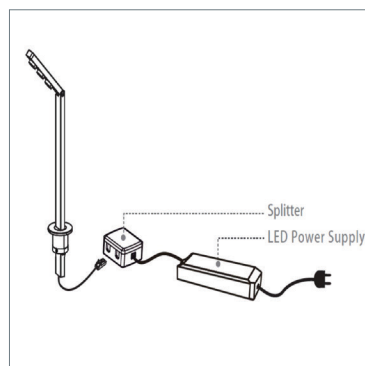
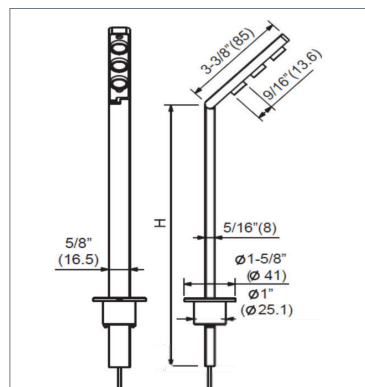


## LED Showcase Light

The Stem-LED is an adjustable LED Light fixture used for direct illumination of merchandise showcases. This fixture provides an extremely high and even light output and is particularly suitable for installation in jewelry cases, bringing out the sparkle in your diamonds. This fixture can be mounted to furniture and adjusted at the base and top to provide illumination where desired.

## Product-Features

- Energy efficient using only 5 W of energy
- Extremely high, even light output
- Stocked in 10" size
- Available in 7" and 20" sizes by special order
- Stocked in 5000K
- Available from 2700K to 6500K by special order
- 50,000 hours usable life
- Efficacy  $\geq 86$  lm/W
- Good CRI  $> 80$
- Stem head swivels  $90^\circ$
- Base rotates  $360^\circ$
- Comes with 46" connecting cable
- To be used with 20 W, 500 mA Constant Current Driver
- Driver comes with 6' power cord and 7" output cord between driver and terminal block
- Can connect up to four Stem-LEDs on one driver





## What you'll need to buy

### Light Fixtures

#### 5000 K

Length	Lumens	Code No.
8 <sup>5</sup> / <sub>16</sub> " *	430	STEMLED/7/500/SS
11 <sup>1</sup> / <sub>4</sub> "	430	STEMLED/10/500/SS
21 <sup>1</sup> / <sub>16</sub> " *	430	STEMLED/20/500/SS

\* Available by special order only

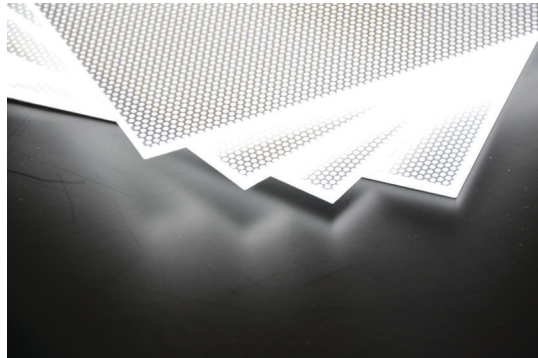
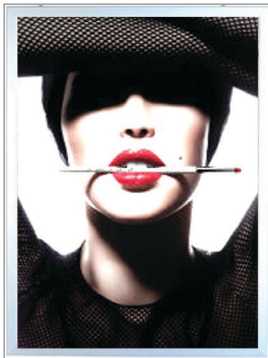
### LED Driver

Description	Code No.
Constant Current 500mA Driver, 20 Watt	PSLED/500/20

### Cables and Connectors

Description	Code No.
Connecting Cable 36"	LEDCC36
Connecting Cable 72"	LEDCC72

# Panel-LED



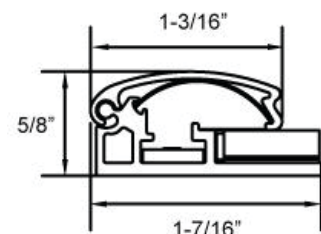
## Customizable Back Lighting

The Panel-LED is the perfect way to illuminate graphics and displays using the latest in LED technology. Its ultra-slim design may be ordered with a snap frame, which makes installation and changing the graphics extremely easy. These panels are energy efficient using between only 7 W to 40 W depending on the size. The Panel-LED offers 70% illumination consistency across the panel.

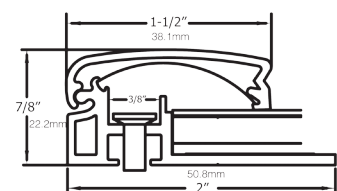
## Product-Features

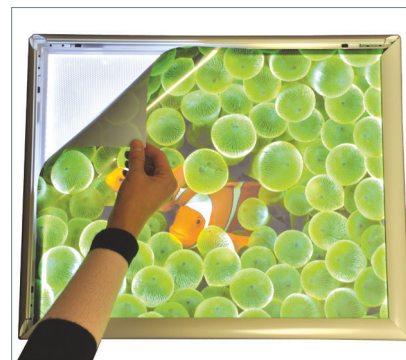
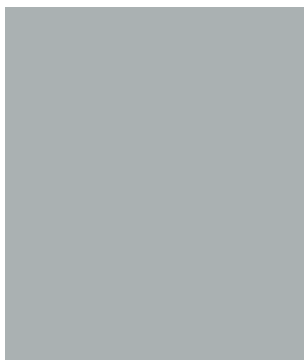
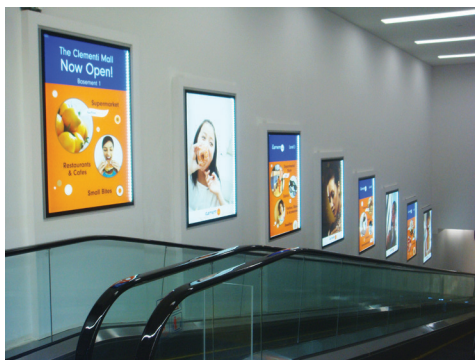
- The panel is super slim. Thickness is only 1/8" - 5/16"
- Available with or without frame
- Standard frame colors: Black or Silver with custom colors available
- The snap frame is easy to open, therefore the image is easy to install and change
- Mounts portrait or landscape
- LED light sources are used, energy saving & long lifetime of 50,000 hours
- Uniform illumination exceeding industry standards
- Optically refined dot pattern technology optimizes the quality of light
- Kelvin temperatures available from 2500-6500 K
- Custom sizes up to 5' x 10' can be made to meet customer's requirements
- Larger sizes can be achieved with Multi Panel Tiling without a visible seam in the panel output
- LED Driver included
- Applicable for retail design, fixtures and displays, signage and interior design

Snap Frame A Profile

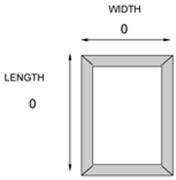


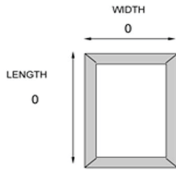
Snap Frame B Profile





## How to Configure your Panel-LED

LED PANEL QUOTE REQUEST FORM (WITH FRAME)	
<b>FRAME COLOR:</b>	<input type="text"/> STANDARD: BLACK, SILVER CUSTOM COLORS AVAILABLE
<b>FRAME DIMENSIONS:</b>	LENGTH: <input type="text"/> WIDTH: <input type="text"/> DEPTH: <input type="text"/> 5/8" 
<b>COLOR TEMP (K):</b>	<input type="text"/> STANDARD: <u>6500K</u> OPTION: <u>5300, 4100K, OTHER</u>
<b>BRIGHTNESS: (AVERAGE LUX)</b>	<input type="text"/> STANDARD: <u>2500 - 3000 LUX</u> OPTION: <u>UP TO 5000 LUX</u>

LED PANEL QUOTE REQUEST FORM (WITHOUT FRAME)	
<b>PANEL DIMENSIONS:</b>	LENGTH: <input type="text"/> WIDTH: <input type="text"/> DEPTH: <input type="text"/>  NOTE: THE STANDARD PANEL DEPTH IS 4MM OR 6MM DEPENDING ON OVERALL PANEL DIMENSIONS
<b>COLOR TEMP (K):</b>	<input type="text"/> STANDARD: <u>6500K</u> OPTION: <u>5300, 4100K, OTHER</u>
<b>BRIGHTNESS: (AVERAGE LUX)</b>	<input type="text"/> STANDARD: <u>2500 - 3000 LUX</u> OPTION: <u>UP TO 5000 LUX</u>

# Edenroc-LED



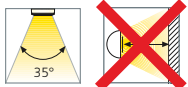
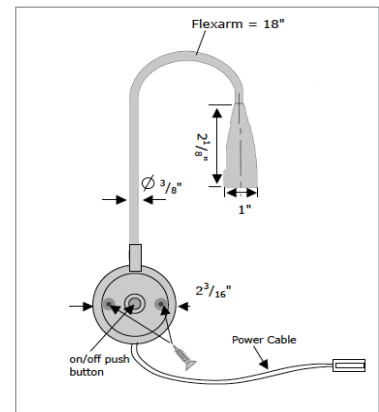
## Value Engineered Flexarm LED Spotlight

Ideal for display applications or as a reading light in headboards. The flexible arm allows an exact direction of the light. The 1 W high-power LED provides a good light output without any heat or UV radiation, allowing you to directly illuminate even the most sensitive products.

## Product-Features

### FLEXVE-LED Edenroc

- Energy efficient using 1 W high power LED
- 18" long Flexarm
- Stainless Steel finish
- Available in 3000 K and 5000 K
- Efficacy: 60-80 lm/W
- Good CRI > 75
- Mounting plate comes with on/off switch
- 350 mA LED Driver with 60" connecting cable included.
- **New dimensions** for driver:  
25mm deep, 48mm long, 38mm wide







## What you'll need to buy

### Spotlights

#### 3000 K

Finish	Lumens	Code No.
Stainless Steel	60	EDENROC/WW/VE

#### 5000 K

Finish	Lumens	Code No.
Stainless Steel	80	EDENROC/CW/VE/HI

# LED Drivers

## Constant Voltage 24 V



6 W Driver



30 W Driver



75 W Driver



96 W Driver

## Electronic Driver For 24 Vdc LEDs

Constant voltage electronic driver for up to 96 W of LEDs. These power supplies work perfectly in all commercial and residential applications and feature very small dimensions.

### Product-Features

- 110 V, 50/60 Hz
- 24 V constant voltage
- Available wattages: 6 W, 30 W, 75 W and 96 W
- Overload protection
- Overheat protection
- Short-circuit protection
- Soft start for maximum LED life
- 79" plug-in power cord
- One attached terminal block with up to 12 power cord connections for the 30 W and 75 W drivers
- Additional terminal blocks available

### Special Features of 96 W Driver

- Built in dimmer
- Can be hardwired
- Universal Input Voltage 120~250Vac
- Can be used in dry and damp locations
- 1-10V Dimming Compatible
- Dimming range 0-100%

### What you'll need to buy

Description	Code No.	Length	Width	Height
6 Watt Driver	PS24V/06/S	2 1/4"	1 3/8"	13/16"
30 Watt Driver	PS24V/30/S	7 1/4"	1 3/4"	1 1/4"
75 Watt Driver	PS24V/75/S	7 1/16"	2 3/8"	1 1/4"
96 Watt Driver	PS24V/96/DIM/S	10 1/2"	1 7/8"	1 9/16"
Terminal Block with DC barrel jack*	PS24V/TB/DC			

\*Note: The PS24V/TB/DC is used with the PS24V/96/DIM/S to convert the DC barrel jack to a terminal block for direct connection with Hera 24V power cords.

# LED Driver, 10 W

Constant Current, 350 mA

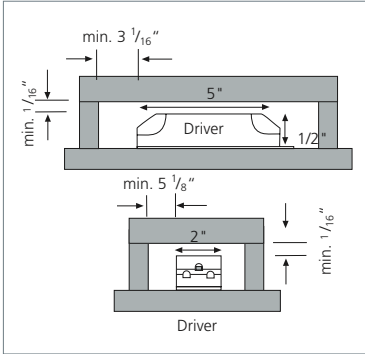


## Electronic Driver For 1-10 W High-Power LEDs

New streamlined, small electronic driver for up to 10 W of high-power LEDs.

### Product-Features

- 120 VAC, 60 Hz
- 350 mA constant current
- Overload protection
- Overheat protection
- Short-circuit protection
- Soft start for maximum LED life
- 79" plug-in power cord
- Attached terminal block for 3 x LED spotlights.
- Additional terminal blocks available
- Driver not dimmable



### What you'll need to buy

Description	Code No.
Constant Current Driver 10 Watt, 350 mA	PSLED/10
Connecting Cable 36"	LEDCC36
Connecting Cable 72"	LEDCC72
Additional Terminal Block	TBLED/B
Power Control Module	PCM
PCM Switch with Cable	PCMSWITCH/R

# Dimmable LED Driver, 18 W

Constant Current, 350 mA

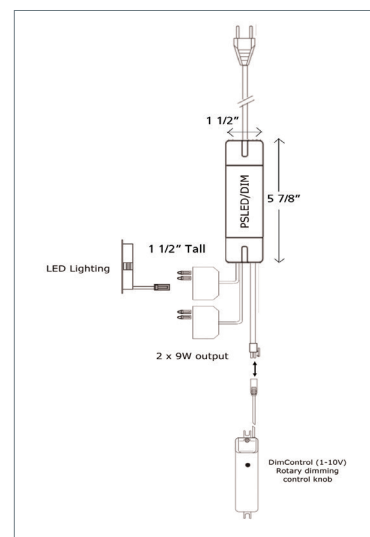


## 18 W Electronic Driver For 2 x 1-9W High-Power LEDs

Constant current electronic driver for up to 18 W of high-power LEDs. This power supply works perfectly in all commercial and residential applications with very small dimensions, and is dimmable.

### Product-Features

- 100-120 VAC, 60 Hz
- 350 mA constant current
- For connections of up to 18 W high-power LEDs
- Overload protection
- Overheat protection
- Short-circuit protection
- Soft start for maximum LED life
- 79" plug-in power cord
- Two attached terminal blocks for 3 x LED spotlights each
- Additional terminal blocks available
- Dimming Range 10 – 100%



PSLED/DIM connection diagram

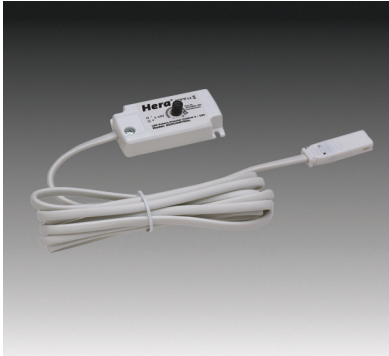
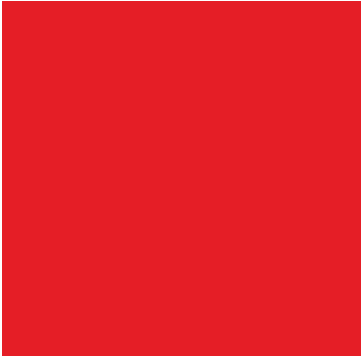
## What you'll need to buy

Description	Code No.
Dimmable Constant Current Driver 18 Watt	PSLED/DIM/S
LED Dimmer Controller	DIMCONTROL/S
Connecting Cable 36"	LEDCC36
Connecting Cable 72"	LEDCC72
Additional Terminal Block	TBLED/B
Power Control Module	PCM
PCM Switch with Cable	PCMSWITCH/R

# LED Dimming Accessories



STICKPSDim



DimControl

## Dimmer for LED Light Fixtures

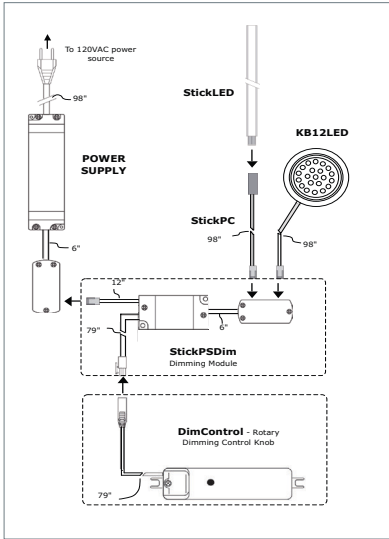
Connects to the output of the 24 Vdc Constant Voltage Driver to allow expanded plug and play functionality for lighting control. For additional versatility in installation the StickPSDim uses a separate controller, the DimControl. This allows the lighting to be adjusted from virtually anywhere in the cabinet.

### Product-Features

- For dimming of 24 Vdc LEDs
- Connects to output of PS24V driver
- Can supply up to 48 W of LEDs
- Dimming range: 0–100 %
- Control signal output: 1–10Vdc
- Must be used with DIMCONTROL/S or 1-10V compatible controller
- Can be ganged together for an expanded dimmable system

### DimControl

- To be used with StickPSDim
- 1 – 10 Vdc Sink Control
- Available separately
- Can be used with PSLED/DIM Constant Current Driver



## What you'll need to buy

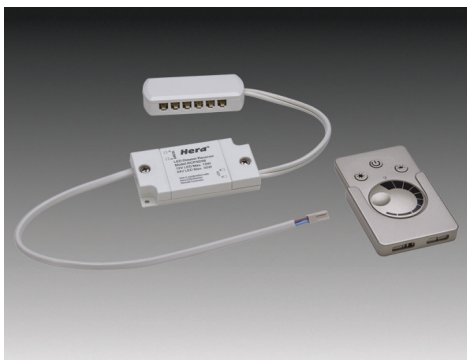
Description	Code No.
Dimming Module	STICKPSDIM/S
Dimming Controller	DIMCONTROL/S

### Optional Accessories

Description	Code No.
Y-Cable adapter	STICKDIM/YCABLE
DIMCONTROL/S extension cable 20"	MINI/500
DIMCONTROL/S extension cable 39"	MINI/1000
DIMCONTROL/S extension cable 72"	MINI/1800

# LED Dimming Accessories

## Constant Voltage LED



RCPSDim



Remote Control

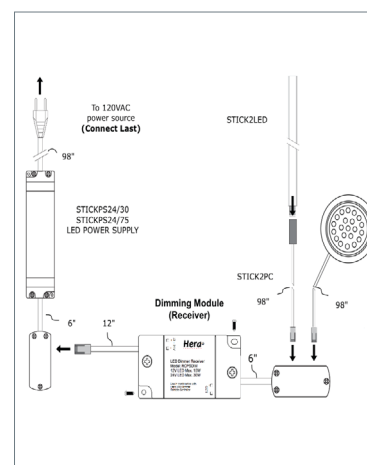
### Remote Control Dimmer for LED Light Fixtures

Remote controlled dimming adapter allows true energy savings when dimming. Connects to the output of the 24 Vdc Constant Voltage Driver to allow expanded plug and play functionality for lighting control. For ease of installation and reduced cabling, the RCPSDIM uses a wireless controller. This allows the lighting to be adjusted from anywhere in the room.

- New Features:**
- Increased load capacity
  - Programmable remote
  - Can operate multiple receivers

### Product-Features

- Allows dimming of 24 Vdc LEDs
- Connects to output of PS24V driver
- Can supply up to 72 W of LEDs
- Dimming range: 0 – 100%
- Quickset buttons for 10 % or 100 % level
- Remote distance up to 50 ft
- Remote requires (1) CR2032 battery. Not included.
- No interference with multiple remote systems



### What you'll need to buy

Description	Code No.
RC Dimming Module	RCPSDim
RC Dimming Controller	(included)

### Optional Accessories

Description	Code No.
Terminal Block	StickTB
Amplifier	(Special Order)

# LED Switching Accessories

## Constant Voltage LED



IR Switch

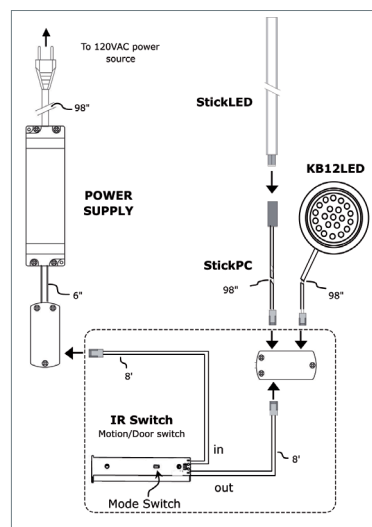


## Infrared Switch For LED Light Fixtures

Low-Voltage IR Switch Controller allows flexibility of switching individual lighting sections without wall controls. The multi-function, motion activated switch will allow two modes of operation. One mode of operation functions as a door contact switch to allow interior cabinet lighting to operate when the door is opened/closed. The second mode will function as a motion sensor to allow touch free operation. Since this is a Class 2 switch, it can be mounted virtually anywhere in the millwork.

### Product-Features

- Dual function IR switch for control of 24 Vdc LEDs
- Function 1 – (default) Door contact switch mode
- Function 2 – Sensor switch mode
- Connects to output of PS24V driver
- Can supply up to 30 W of LEDs
- Surface mountable with included tape
- Recessed mountable in 9/16" drill hole



## What you'll need to buy

Description	Code No.
IR Switch	IRSWITCH
Terminal block	(included)

### Optional Accessories

Description	Code No.
Terminal Block	StickTB
Rocker Switch	SWITCH/PS24



# SlimLite XL T5

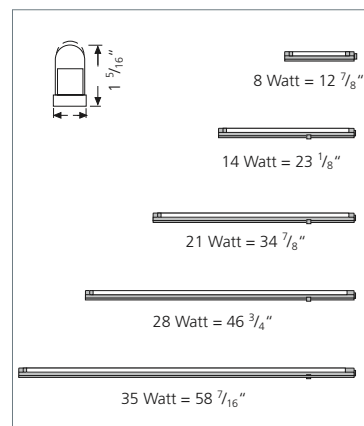


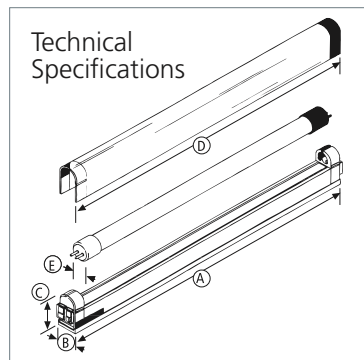
## T5 Fluorescent Light Fixture with Integrated Connecting System and Electronic Ballast

The XL offers all the benefits of SlimLite: It's cooler, brighter and more compact than most other fluorescent fixtures. SlimLite XL features standard T-5 lamps which are available in a variety of light colors. Its optional plexiglas cover makes it an ideal light fixture for food applications.

### Product-Features

- Built-in electronic ballast
- Energy efficient, only 8 W, 14 W, 21 W, 28 W and 35 W
- Uses standard T-5 lamps (to be ordered separately)
- Good CRI > 80
- Plug-in modular system permits easy connection for continuous lighting
- Long bulb life, rated 20,000 hrs.
- Available in five different lengths:  
1' (12  $\frac{7}{8}$ " ), 2' (23  $\frac{1}{8}$ " ), 3' (34  $\frac{7}{8}$ " ),  
4' (46  $\frac{3}{4}$ " ) and 5' (58  $\frac{7}{16}$ " ) width: 29  $\frac{1}{32}$ " , height: 1  $\frac{5}{16}$ "
- Optional plexiglass cover available (to be ordered separately)
- Contemporary white housing
- End of lamp life circuitry to protect ballast





## What you'll need to buy

### SlimLite XL Fluorescent Light Fixture

Description	Watt	Length	Code No.
ES12	8	12 <sup>7</sup> / <sub>8</sub> "	ES12/R
ES22	14	23 <sup>1</sup> / <sub>8</sub> "	ES22/R
ES34	21	34 <sup>7</sup> / <sub>8</sub> "	ES34/R
ES46	28	46 <sup>3</sup> / <sub>4</sub> "	ES46/R
ES59	35	58 <sup>7</sup> / <sub>16</sub> "	ES59/R

Also available with bulb and cover. Add BC (Cool White) or WW BC (Warm White) to product code.

### Accessories

Description	Code No.
-------------	----------

Power Cord, Connecting Cables, Hardwire Box, Direct Connector and Switch same as SlimLite, see page 63

Replacement Bulb	8W Cool White	SFB8
	8W Warm White	SFB8WW
	14W Cool White	SFB14
	14W Warm White	SFB14WW
	21W Cool White	SFB21
	21W Warm White	SFB21WW
	28W Cool White	SFB28
	28W Warm White	SFB28WW
	35W Cool White	SFB35
	35W Warm White	SFB35WW
Plexiglas Cover	for ES12	SPLX12/R
	for ES22	SPLX22/R
	for ES34	SPLX34/R
	for ES46	SPLX46/R
	for ES59	SPLX59/R

	ES12	ES22	ES34	ES46	ES59
(A) fixture length	12 <sup>7</sup> / <sub>8</sub> "	23 <sup>1</sup> / <sub>8</sub> "	34 <sup>7</sup> / <sub>8</sub> "	46 <sup>3</sup> / <sub>4</sub> "	58 <sup>7</sup> / <sub>16</sub> "
(B) fixture width	<sup>29</sup> / <sub>32</sub> "	<sup>29</sup> / <sub>32</sub> "	<sup>29</sup> / <sub>32</sub> "	<sup>29</sup> / <sub>32</sub> "	<sup>29</sup> / <sub>32</sub> "
(C) fixture height with diffuser	1 <sup>5</sup> / <sub>16</sub> "	1 <sup>5</sup> / <sub>16</sub> "	1 <sup>5</sup> / <sub>16</sub> "	1 <sup>5</sup> / <sub>16</sub> "	1 <sup>5</sup> / <sub>16</sub> "
(D) tube length	11 <sup>1</sup> / <sub>4</sub> "	21 <sup>1</sup> / <sub>2</sub> "	33 <sup>1</sup> / <sub>4</sub> "	45 <sup>1</sup> / <sub>8</sub> "	57" "
(E) tube diameter	T5 ( <sup>5</sup> / <sub>8</sub> ")	T5 ( <sup>5</sup> / <sub>8</sub> ")	T5 ( <sup>5</sup> / <sub>8</sub> ")	T5 ( <sup>5</sup> / <sub>8</sub> ")	T5 ( <sup>5</sup> / <sub>8</sub> ")
watts	8	14	21	28	35
lumens	400	1350	2100	2900	3650
current	136 mA	136 mA	198 mA	253 mA	315 mA
in-rush current	less than 5 AMP				
CRI	> 82	> 82	> 82	> 82	> 82
voltage	AC 120	AC 120	AC 120	AC 120	AC 120
frequency	60 Hz	60 Hz	60 Hz	60 Hz	60 Hz
maximum watts in line	585 Watts	585 Watts	585 Watts	585 Watts	585 Watts

# SlimLite T4

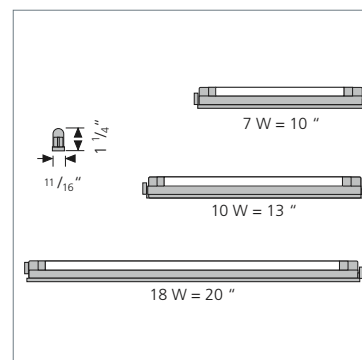


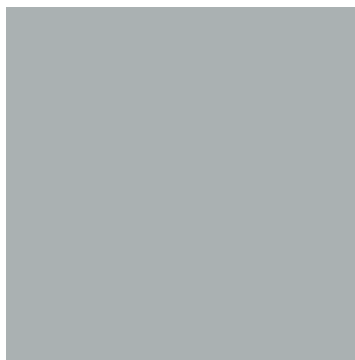
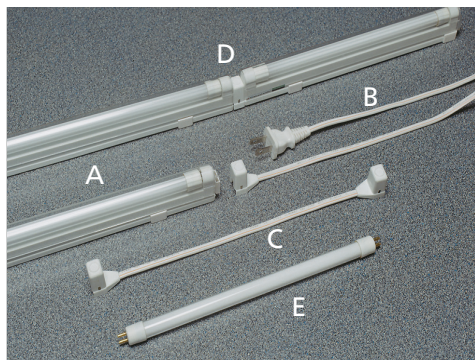
## A Fluorescent so Compact, It Fits Even the Most Hard-To-Light Areas

The SlimLite T4 fixture is easy to install with a snap-in system. The modular connecting system makes it simple to create long, continuous lines of fluorescent lighting to fit any space.

### Product-Features

- Built-in electronic ballast
- Energy efficient using only 7 W, 10 W and 18 W
- Slender profile fits virtually any furniture, cabinet or display
- Attractive, easy to clean plexiglas cover protects bulb
- Instant starting, Tri Phosphor lamp is quiet and flicker-free
- Plug-in modular system permits easy connection for continuous lighting
- Long bulb life, rated 10,000 hrs.
- Contemporary white housing
- Available in three different lengths: 10", 13", and 20"; width:  $1\frac{1}{16}$ " ; height:  $1\frac{1}{4}$ "
- Available with T4 Cool White or Warm White bulb
- Good CRI > 80
- Max. lamp watts in line 144
- End of lamp life circuitry to protect ballast (10 & 18 W)





## What you'll need to buy

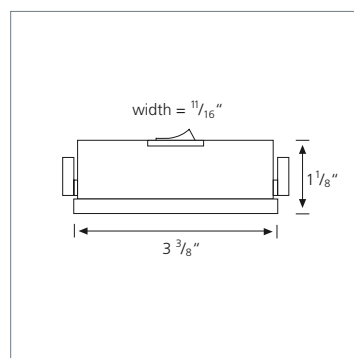
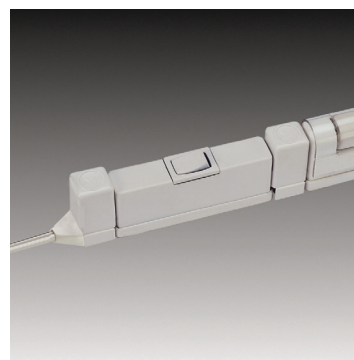
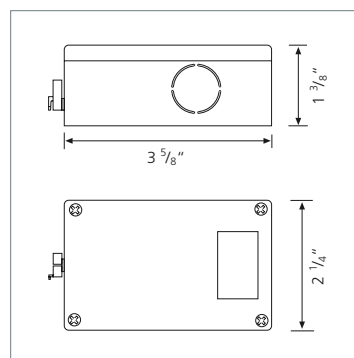
### SlimLite Fluorescent Light Fixture

	Description	Watt	Length	Kelvin	Code No.
<b>A</b>	ES20	18	20"	Cool White (4100K)	ES20/P/R
				Warm White (3450K)	ES20WW/P/R
	ES13	10	13"	Cool White (4100K)	ES13/P/R
				Warm White (3450K)	ES13WW/P/R
	ES10	7	10"	Cool White (4100K)	ES10/P/R
				Warm White (3450K)	ES10WW/P/R

All light fixtures include bulb and plexiglas cover

### Accessories

	Description	Code No.
<b>B Power Cord</b>	6' long	SPC/XL/R
	6' with roller switch	SPC/S/XL/R
	6' with straight connector	SPC72/STC
Note: Power cords and connecting cables are also available with 90° or straight connectors and in various lengths		
<b>C Connecting Cables</b>	6" long	SCC6/XL/R
	1' long	SCC12/XL/R
	2' long	SCC24/XL/R
	4' long	SCC48/XL/R
	6' long	SCC72/XL/R
	10' long	SCC120/XL/R
<b>D Direct Connector</b>		SDC/XL/R
<b>E Replacement Bulb</b>	7 W Cool White	SFB7/R
	7 W Warm White	SFB7WW/R
	10 W Cool White	SFB10/R
	10 W Warm White	SFB10WW/R
	18 W Cool White	SFB18/R
	18 W Warm White	SFB18WW/R
<b>F Hardwire Box</b>		SHWC/XL/R
	with switch	SHWC/S/XL/R
<b>G ON/OFF Rocker Switch</b>		SRS/XL/R





# Store Fixtures & Displays



Hera's **ELite-LED** is used in the above display emphasizing the vibrant colors of the merchandise in this footwear display.





# Store Fixtures & Displays



Lighting is very important in the jewelry industry. Our **Stem-LED** can be used in glass display cases like the one above to make sure every diamond sparkles.



Design by Tuxedo, Photo by Philip Castleton

The **Panel-LED** allows for the graphics to stand out. This is a very efficient way take advertisements to the next level.



# Store Fixtures & Displays





# Store Fixtures & Displays





# Store Fixtures & Displays



The **Panel-LED** can also be used as a very effective backlight in any retail display.



# Store Fixtures & Displays



This is a great transformation of a before and after for a shoe department. Hera's linear LEDs draw the eye to the product, which is the main focus.



# Commercial/Hospitality



The **SR68-LED** at the top of this headboard adds the perfect amount of lighting without being directly in the eye due to its swivel capabilities.



# Commercial/Hospitality



Hera's lighting solutions can also be used in work spaces allowing for optimal task lighting while being cost effective.





# Commercial/Hospitality



**Stick2-LED** offers maximum lighting impact with its low profile, which can be applied to very confined places such as these wine case displays.





# Commercial/Hospitality



HO-LEDs are illuminating the world's largest ferris wheel in Singapore.





# Kitchen Cabinets | Residential



Hera's under cabinet luminaries offer brilliant lighting solutions for even the smallest spaces. The outstanding feature of these systems is their minimal depths and dimensions making it fit virtually anywhere.



The total flexibility of our lighting solutions makes it very easy to add LED or Fluorescent lighting to cabinets to create that special atmosphere you are looking for to entertain your customers and friends.



# Kitchen Cabinets | Residential



This Poggenpahl kitchen looks stylish and modern with the **QPad-LED** mounted under the cabinets. The sleek, low profile design adds not only adequate lighting, but a decorative element as well.



Hera has linear LED lighting solutions to fit any space and any budget. The small dimensions make it a designer's dream.



# Kitchen Cabinets | Residential



Linear and Spotlight LEDs are used in this butlers pantry for the perfect amount of light under and inside the cabinets



# Kitchen Cabinets | Residential



HGTV's show Elbow Room put the Tape LED to creative use in two episodes with this ceiling cove display and wall niche. Its flexibility and high light output make it the perfect solution for any environment or application..



# LED-Lighting

## The latest lighting technology for your furniture, cabinets and displays

An LED (Light Emitting Diode) is a semiconductor that emits visible light when an electric current passes through.

- Extremely long lamp life of up 50,000 hours
- Lower power consumption
- High efficiency
- They produce virtually no heat
- No infrared or ultraviolet radiation
- LEDs are shatter proof

Hera has been at the forefront of this new technology. Today we proudly offer you a complete line of LED solutions for unlimited applications. Our engineers will continue to develop innovative products incorporating the advantages LEDs have to offer.

## Can LEDs provide a consistent light color?

Consumer demand for LED lighting has pushed this technology to a state of becoming highly energy efficient while achieving increasing levels of light output. All manufacturers are constantly pursuing improvements in LED lighting performance. Hera Lighting is at the front of this movement with new and innovative LED luminaires. We strive to provide quality, durability and value with every product. Hera only uses the latest generation of high power LEDs from reputable suppliers such as Luxeon, CREE or Osram.

You may notice color variations between LED fixtures. This is normal. All manufacturers have this issue and Hera goes to great lengths to minimize this effect.

The process we use is called Binning. We purchase high quality LEDs from the best diode manufacturers and only accept few select Bin Codes. Because we cannot limit our production to only one Bin Code, we select our Warm White and Cool White Bin Codes with careful consideration to quality. Our Warm White range of Bin Codes is 2800K to 3800K, and the Cool White range is 3900K to 7500K. As we manufacture our LED luminaires, each product will have WW or CW and the Bin Code applied to the fixture and product packaging. We use our best effort to match Bin Codes but we cannot guarantee a perfect match or specific Bin Code availability. In order to minimize the color variation be sure to use the same Bin Code when possible. Keep in mind that within each bin code the Kelvin temperature range can vary from 200K to possibly 700K.

Much effort has been made to ensure you will receive the best color matching that LED technology will allow. If you think your lighting color variation is too great, please check that each fixture belongs to the same bin. If they do not then the color variation may be more noticeable. If you think the light is defective, return the fixture and we will test it. If we find there is a defect or the Kelvin temperature is out of range, we will replace your fixture free of charge.

### HO-LED Bin Code markings on box and fixture



Cool-White



Warm-White

For more information on Hera LEDs and our commitment to the future of energy efficient lighting, please visit:  
[www.heralighting.com/fileadmin/media/pdfs2013/led.pdf](http://www.heralighting.com/fileadmin/media/pdfs2013/led.pdf)

# Signs and Symbols



DesignLights Consortium - Quality Product List Approved



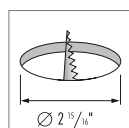
Underwriters Laboratories Inc. – Listing mark for the USA and Canada



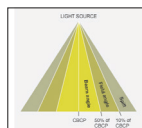
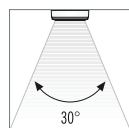
Intertek Testing Services – Listing mark for the USA and Canada



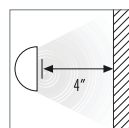
New York City Department of Buildings



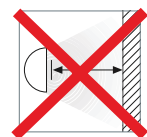
Necessary hole diameter for recessed spotlight



Beam angle. 50% CBCP (Center Beam Candlepower)



Minimum clearance to combustible materials in front of a spotlight



No minimum clearance required



# ***Hera***<sup>®</sup>

Hera Lighting L.P  
3025 Business Park Drive  
Norcross, GA 30071

Telephone (770) 409-8558  
Telefax (770) 409-8531  
Toll free (800) 336-4372

[www.heralighting.com](http://www.heralighting.com)

Subject to technical changes without prior notice. Position as per 12/2016